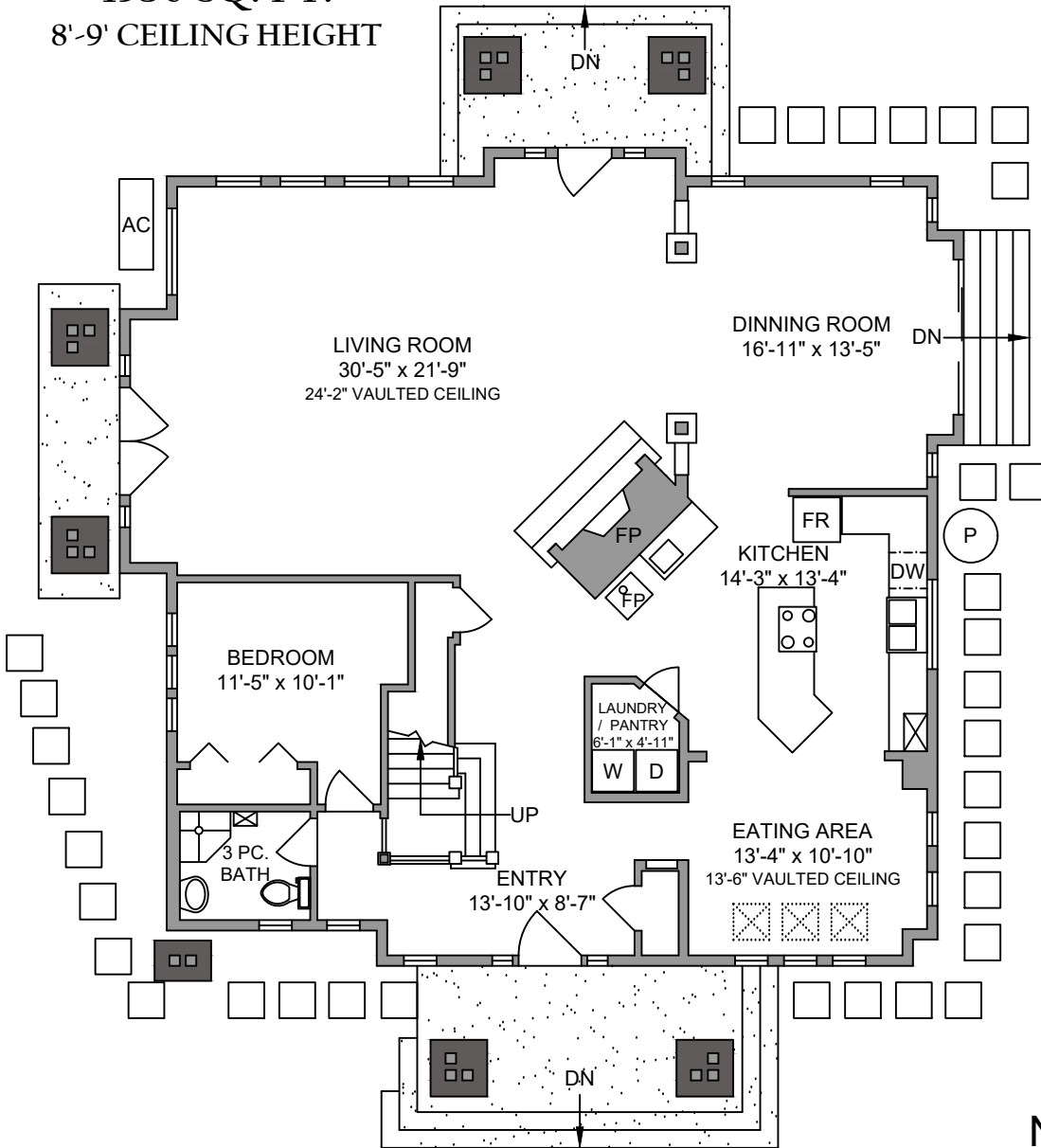


# MAIN FLOOR

1950 SQ. FT.

8'-9" CEILING HEIGHT



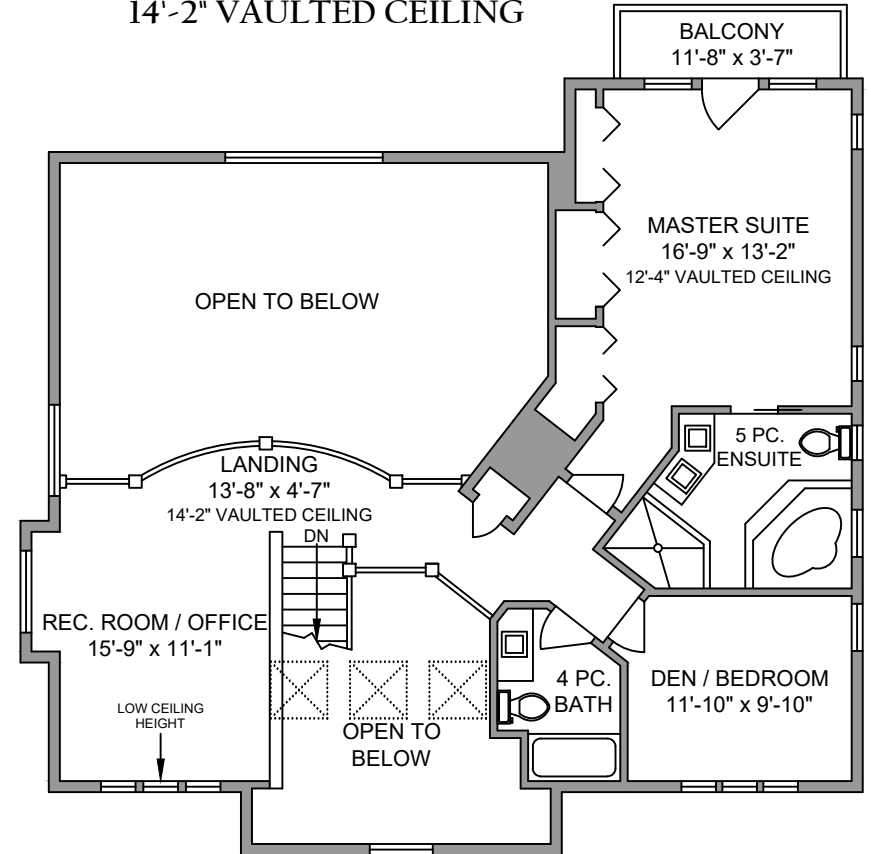
# PEMBERTON HOLMES

ESTABLISHED 1887

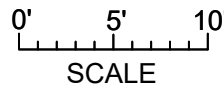
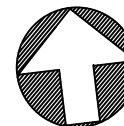
# UPPER FLOOR

950 SQ. FT.

14'-2" VAULTED CEILING



NORTH

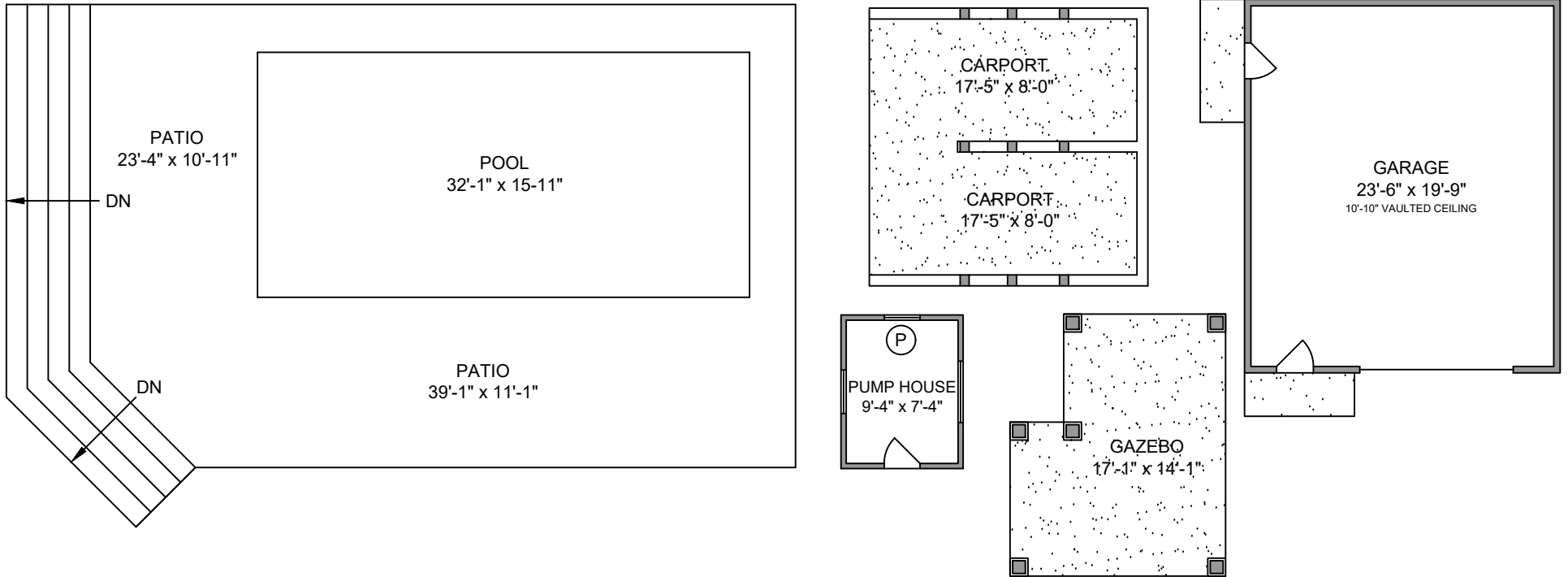


3220 EAGLE'S LAKE ROAD JULY 11, 2018 PREPARED FOR THE EXCLUSIVE USE OF ELIAS MAVRIKOS PLANS MAY NOT BE 100% ACCURATE, IF CRITICAL BUYER TO VERIFY.			
FLOOR	AREA (SQ. FT.)		
	FINISHED	GARAGE	PATIO
MAIN	1950	500	852
UPPER	950	-	42
<b>TOTAL</b>	<b>2900</b>	<b>500</b>	<b>894</b>



250-884-9753  
matt@propermeasure.com  
www.propermeasure.com

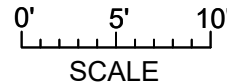
## 3220 EAGLE'S LAKE ROAD EXTERIOR FEATURES



250-884-9753  
 matt@propermeasure.com  
 www.propermeasure.com

*PEMBERTON  
HOLMES*

· ESTABLISHED 1887 ·



3220 EAGLE'S LAKE ROAD JULY 11, 2018			
PREPARED FOR THE EXCLUSIVE USE OF ELIAS MAVRIKOS PLANS MAY NOT BE 100% ACCURATE, IF CRITICAL BUYER TO VERIFY.			
FLOOR	AREA (SQ. FT.)		
	FINISHED	GARAGE	PATIO
MAIN	1950	500	852
UPPER	950	-	42
<b>TOTAL</b>	<b>2900</b>	<b>500</b>	<b>894</b>