

PEMBERTON HOLMES

ESTABLISHED 1887

MAIN FLOOR

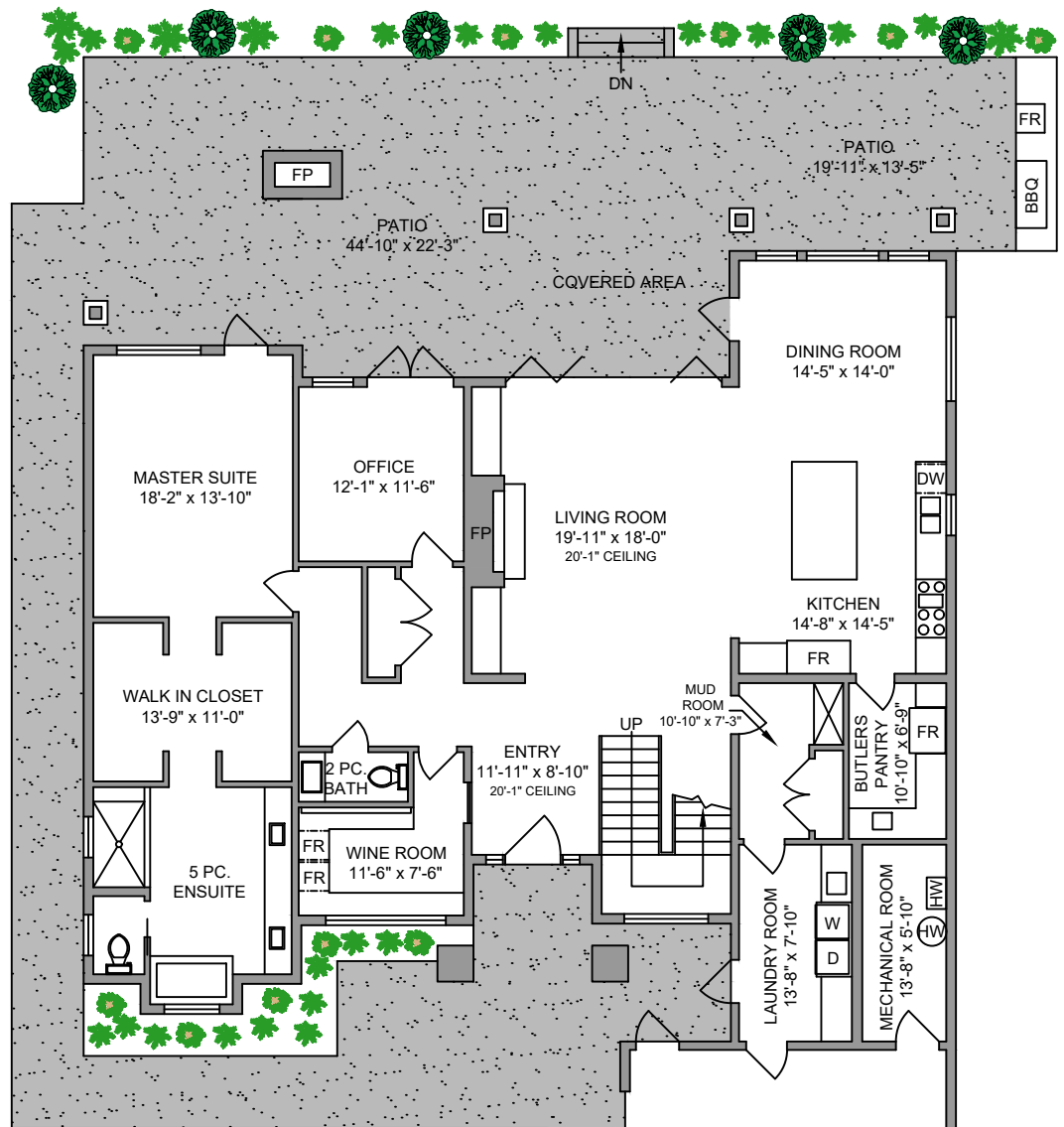
2538 SQ. FT.

10'-0" CEILING HEIGHT

NORTH



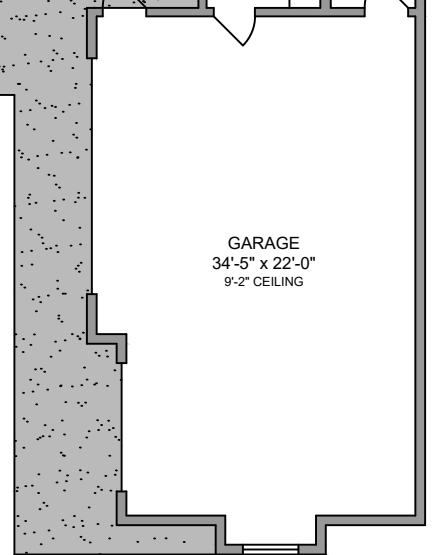
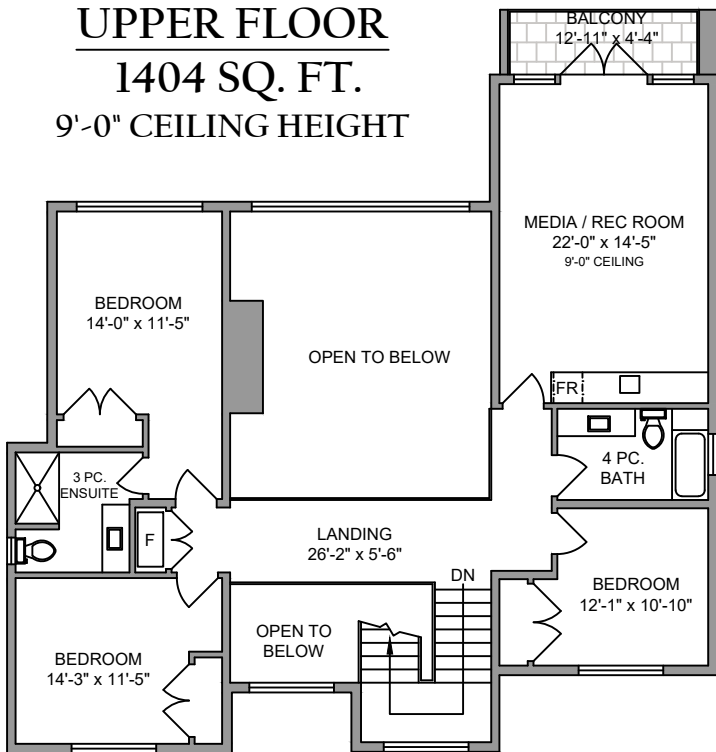
0' 5' 10'
SCALE



UPPER FLOOR

1404 SQ. FT.

9'-0" CEILING HEIGHT



250-884-9753
matt@propermeasure.com
www.propermeasure.com

10731 BAYFIELD ROAD OCTOBER 19, 2018 PREPARED FOR THE EXCLUSIVE USE OF ELIAS MAVRIKOS PLANS MAY NOT BE 100% ACCURATE, IF CRITICAL BUYER TO VERIFY.			
FLOOR	AREA (SQ. FT.)		
	FINISHED	GARAGE	DECK / PATIO
MAIN	2538	922	1230
UPPER	1404	-	56
TOTAL	3942	922	1286