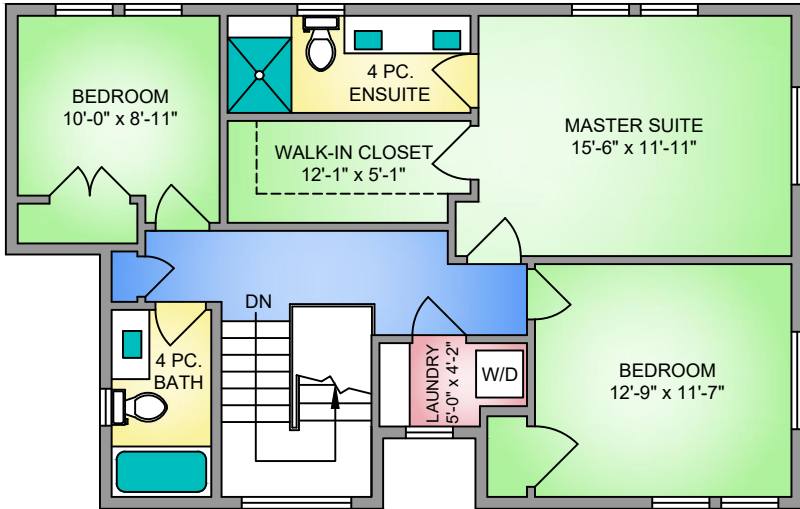


UPPER FLOOR

915 SQ. FT.

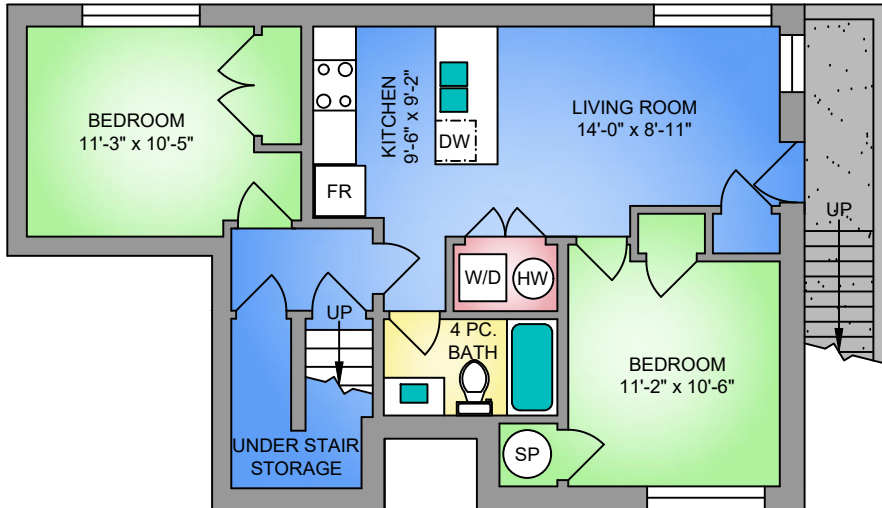
8' CEILING HEIGHT



LOWER FLOOR

846 SQ. FT.

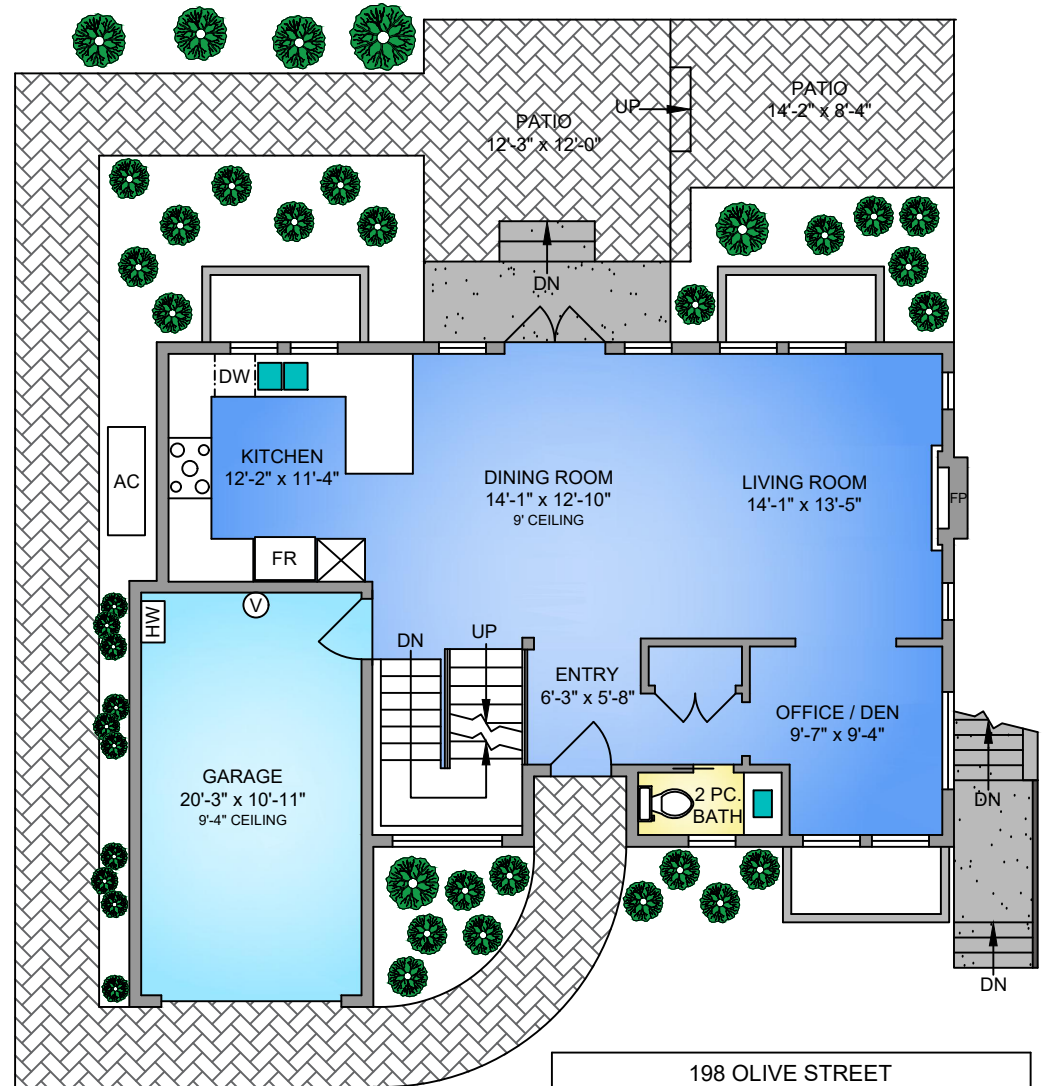
8' CEILING HEIGHT



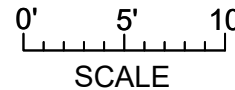
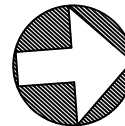
MAIN FLOOR

846 SQ. FT.

9' CEILING HEIGHT



NORTH



250-884-9753
matt@propermeasure.com
www.propermeasure.com



198 OLIVE STREET JANUARY 9, 2019 PREPARED FOR THE EXCLUSIVE USE OF ELIAS MAVRIKOS PLANS MAY NOT BE 100% ACCURATE, IF CRITICAL BUYER TO VERIFY.			
FLOOR	AREA (SQ. FT.)		
	FINISHED	GARAGE	DECK / PATIO
MAIN	846	242	317
UPPER	915	-	-
LOWER	846	-	-
TOTAL	2607	242	317