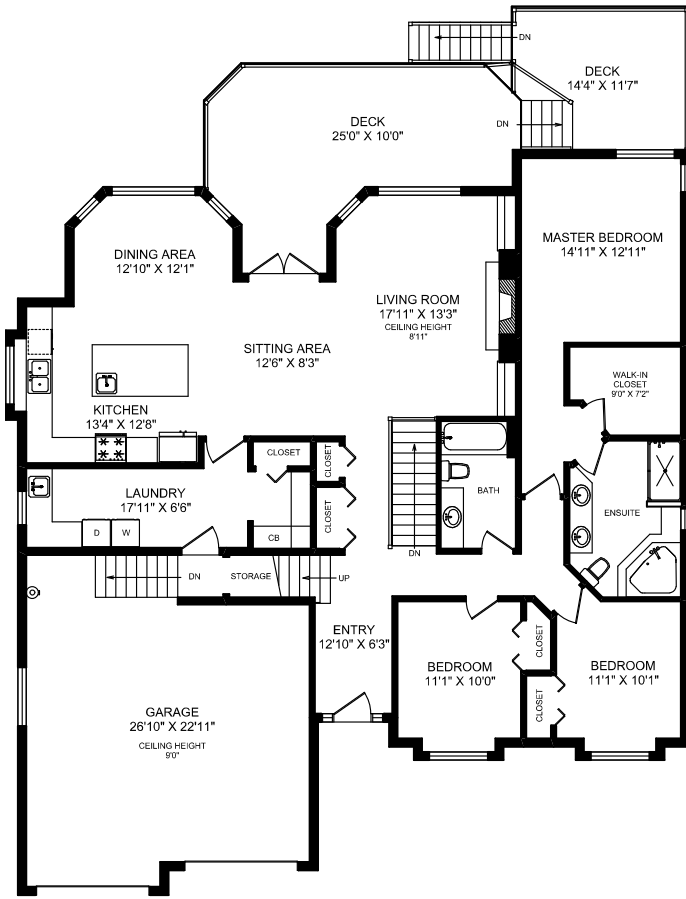
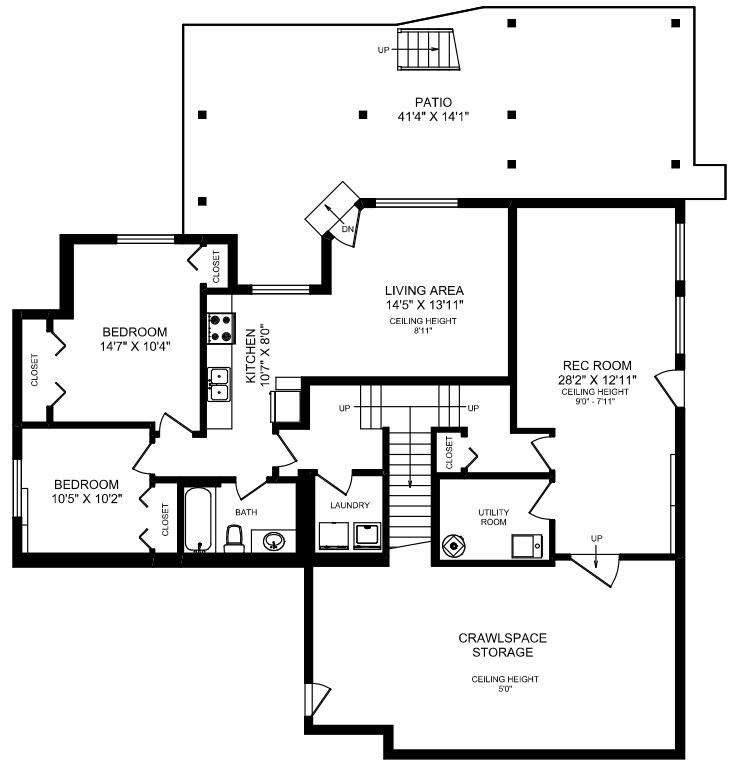


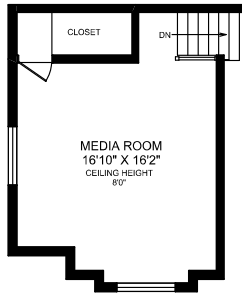
MAIN FLOOR



LOWER FLOOR



UPPER FLOOR



AREA		SQ FT	
FLOOR	FINISHED	UNFINISHED	TOTAL
MAIN	2073	0	2073
UPPER	385	0	385
LOWER	1479	0	1479
TOTAL	3937	0	3937
GARAGE		606	
PATIO		684	
DECKS		466	
CRAWLSPACE		469	

**PEMBERTON
HOLMES**

• ESTABLISHED 1887 •

4378 FAITHWOOD ROAD
MEASURED FOR THE EXCLUSIVE USE OF
ELI MAVRIKOS

MEASURED 22ND OF FEBRUARY, 2013 BY JORDAN GREENWOOD

All information furnished regarding this property is from sources deemed reliable but no warranty or representation is made to the accuracy thereof.

realfoto
marketing tools for REALTORS®

250.388.6998 orders@realfotovictoria.com