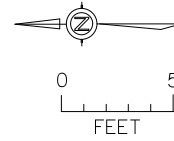
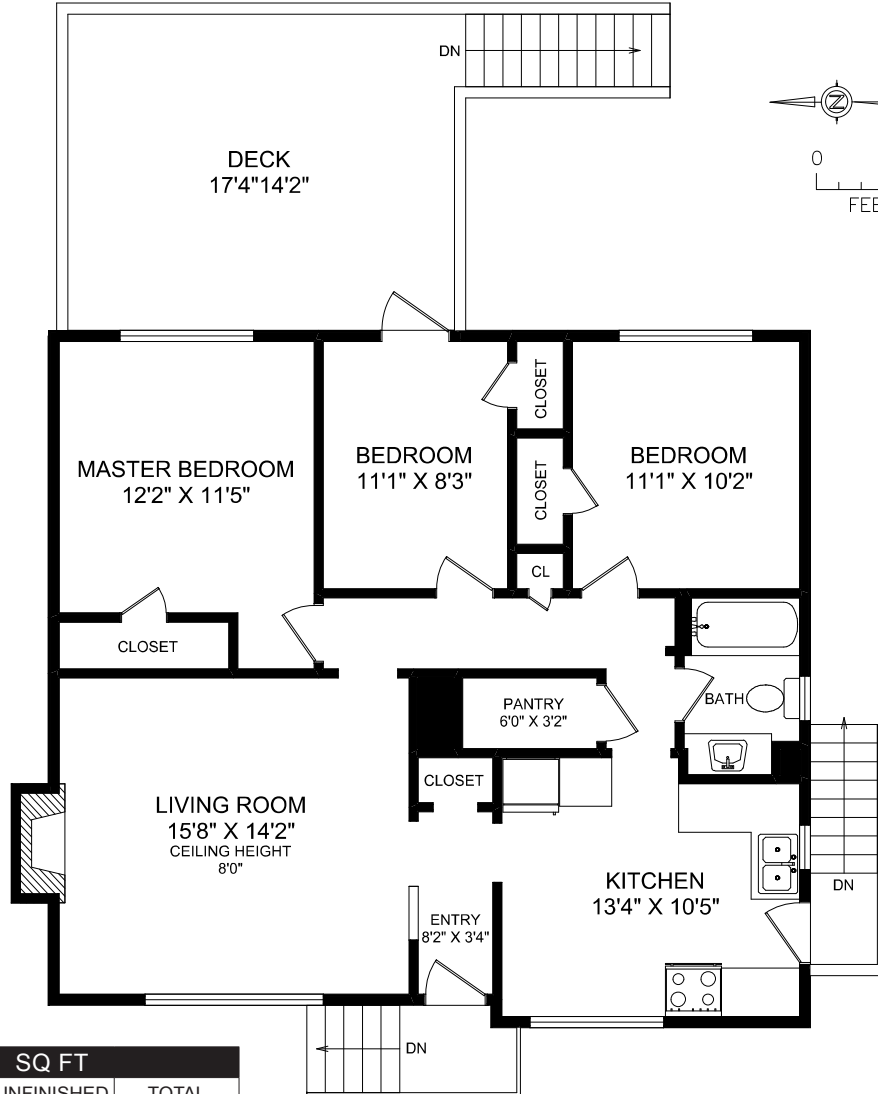
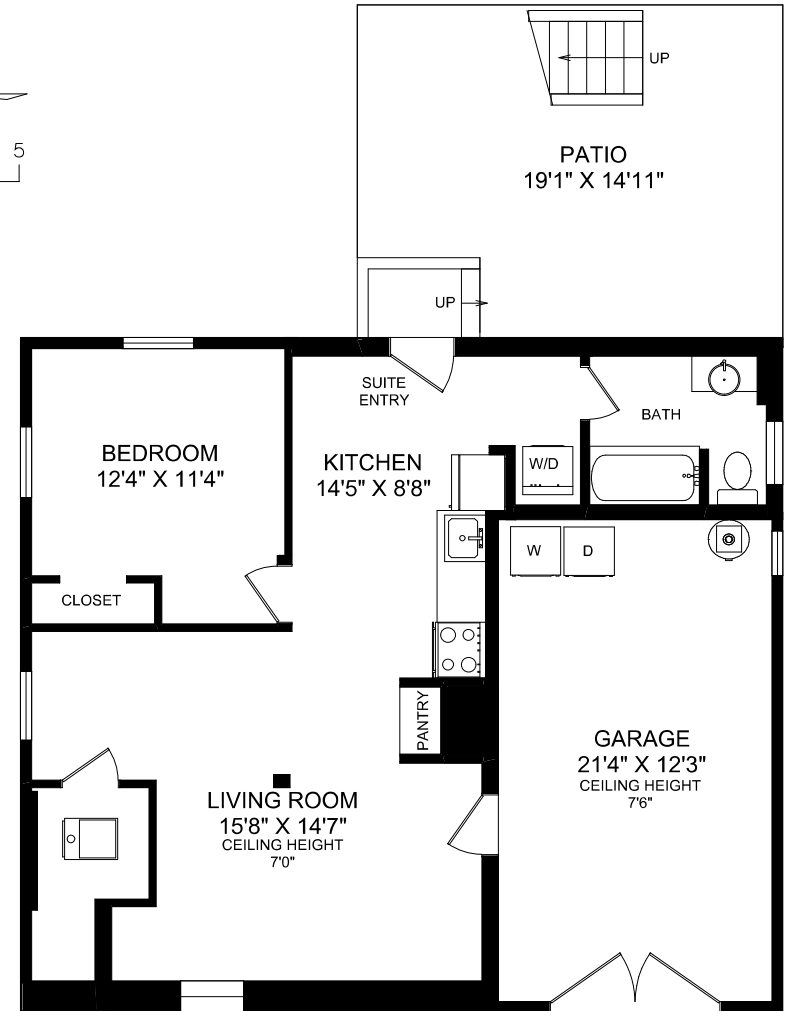


MAIN FLOOR



LOWER FLOOR



AREA	SQ FT		
FLOOR	FINISHED	UNFINISHED	TOTAL
MAIN	1048	0	1048
LOWER	752	0	752
TOTAL	1800	0	1800
GARAGE		290	
PATIO		268	
DECK		269	

**PEMBERTON
HOLMES**

• ESTABLISHED 1887 •

3375 MAPLEWOOD ROAD

DOCUMENT PREPARED FOR THE EXCLUSIVE USE OF

ELI MAVRIKOS

MEASURED FEBRUARY 22ND, 2016 BY CLAY OVINGE



250.388.6998 orders@realfoto.ca

All information furnished regarding this property is from sources deemed reliable but no warranty or representation is made to the accuracy thereof.