

# SCHEDULE A

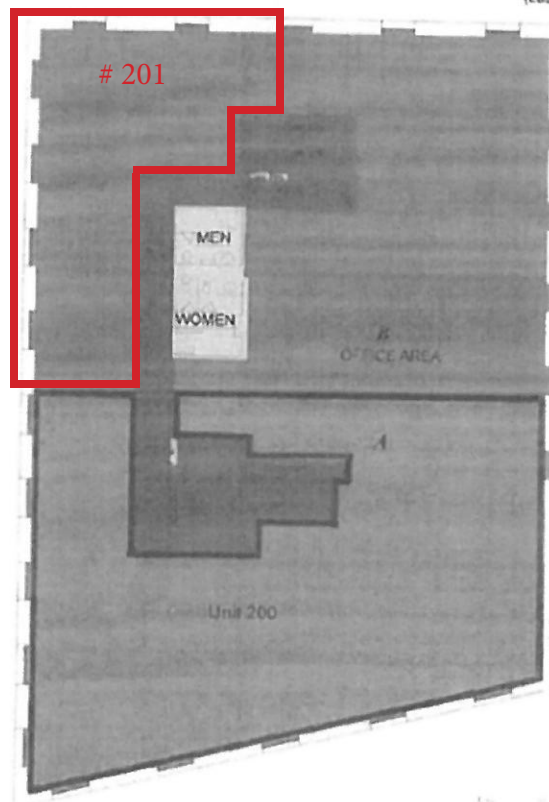
## PLAN SHOWING PREMISES (UNIT 200)

PREPARED FOR:  
Wharf Street Holdings Ltd.  
1010 475 West Georgia Street  
Vancouver, BC V6B 4M9

### PROPOSED LEASE PLAN

1019 WHARF ST  
VICTORIA, BC

SECOND FLOOR  
(As Measured October 2010)  
(Last Updated February 2014)



FLOOR SUMMARY	SQ.FT.
Total Rentable	7,568
Total Occupant	8,450
Load Factor	1.2198
Capped Load Factor	1.2198
Base Building Circulation	472
Service & Amenity	245
Total Vertical Penetration	413

Suite #	Usable	Rentable	% of Tot R.
A	3,342.2	3,954.7	8.3
B	3,208.2	3,913.2	8.2

Note: Areas based on PDF  
files supplied by client, and are  
subject to field verification

AREAS COMPUTED IN ACCORDANCE WITH  
ANSI/BOMA (Z65.1) 2010 OFFICE STANDARD  
METHOD B (SINGLE LOAD FACTOR METHOD)

LASERTECH is a registered US trademark of LaserTech Floorplans Ltd.  
Copyright © 1998-2014 LaserTech Floorplans Ltd. All Rights Reserved

**LASERTECH**  
FLOORPLANS

TEL (888) 393-6055  
FILE 12-293 (10 206)

Survey Accuracy +/- 0.10 %