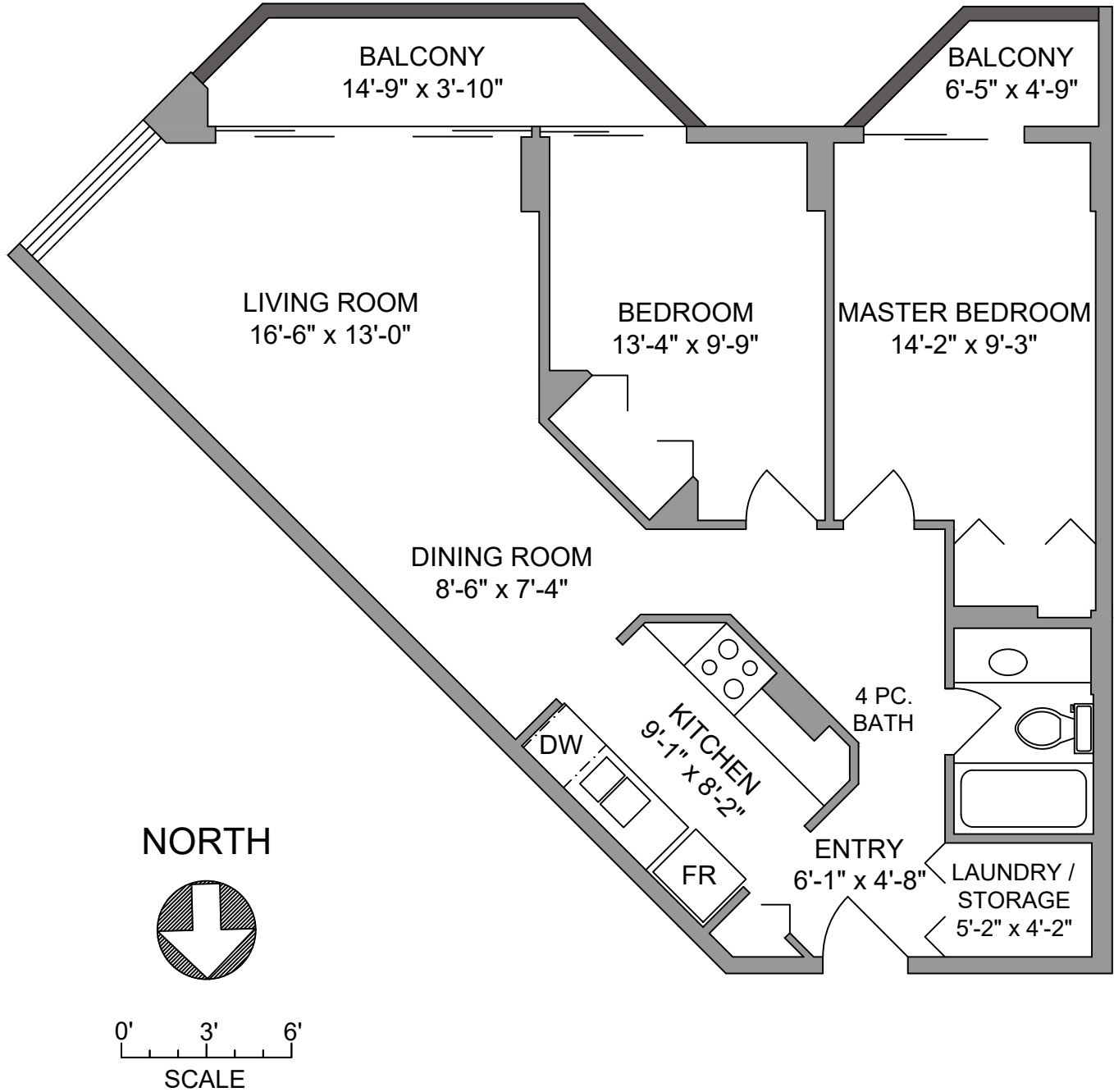


**UNIT 1808 - 620 TORONTO STREET**  
**800 SQ. FT.**  
**8' CEILING HEIGHT**



UNIT 1808 - 620 TORONTO STREET		
JULY 18, 2018		
PREPARED FOR THE EXCLUSIVE USE OF ELIAS MAVRIKOS		
PLANS MAY NOT BE 100% ACCURATE, IF CRITICAL BUYER TO VERIFY.		
FLOOR	AREA (SQ. FT.)	
	FINISHED	BALCONY
EIGHTEENTH	800	80

**PEMBERTON  
HOLMES**  
 · ESTABLISHED 1887 ·

**PROPERMEASURE**  
 PRECISION

250-884-9753  
 matt@propermeasure.com  
 www.propermeasure.com