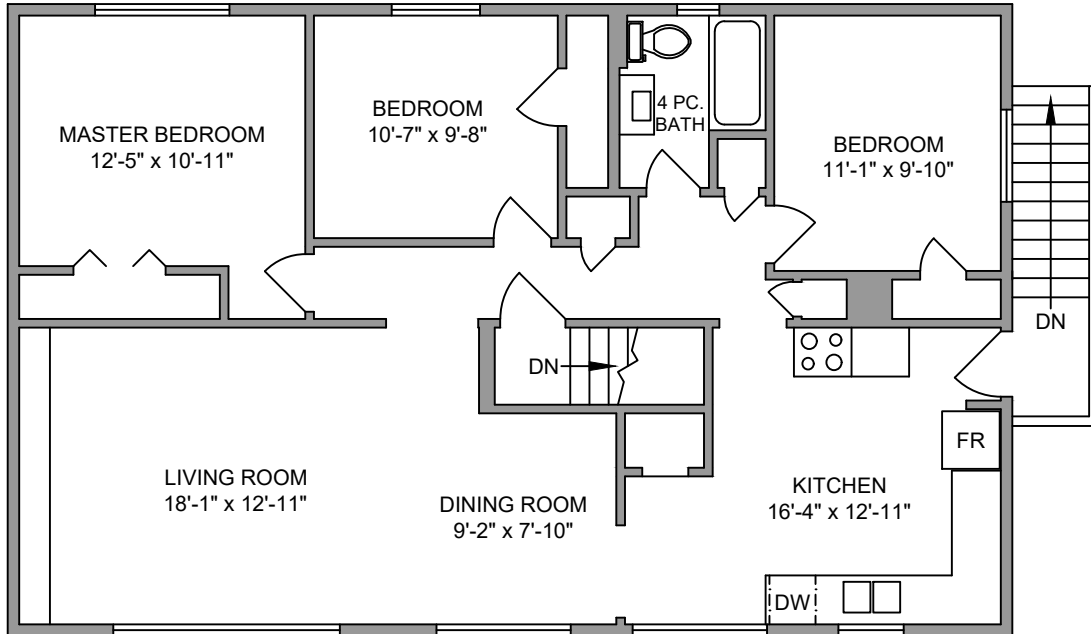


535 WEST BAY TERRACE - SECOND FLOOR

1196 SQ. FT.

8'-0" CEILING HEIGHT

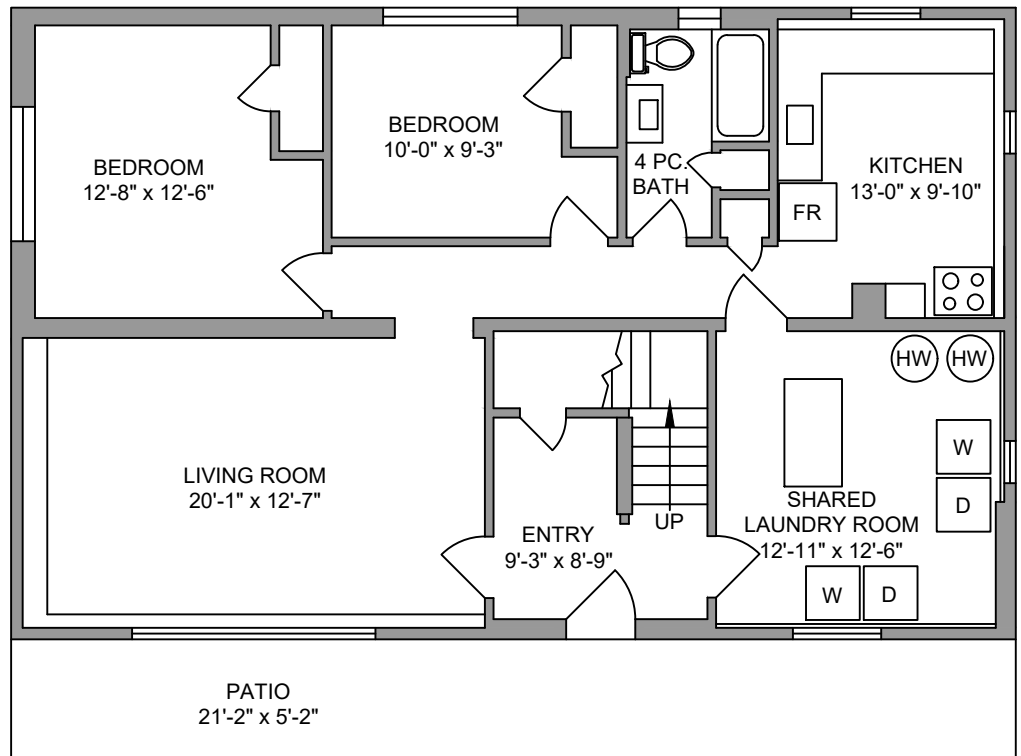
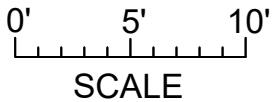


533 WEST BAY TERRACE - FIRST FLOOR

1196 SQ. FT.

8'-0" CEILING HEIGHT

NORTH



**PEMBERTON
HOLMES**

· ESTABLISHED 1887 ·



250-884-9753
matt@propermeasure.com
www.propermeasure.com

535 / 533 WEST BAY TERRACE		
AUGUST 14, 2018		
PREPARED FOR THE EXCLUSIVE USE OF ELIAS MAVRIKOS PLANS MAY NOT BE 100% ACCURATE. IF CRITICAL BUYER TO VERIFY.		
FLOOR	AREA (SQ. FT.)	
	FINISHED	DECK / PATIO
533 WEST BAY - 1ST	1196	174
535 WEST BAY - 2ND	1196	-
TOTAL	2392	174