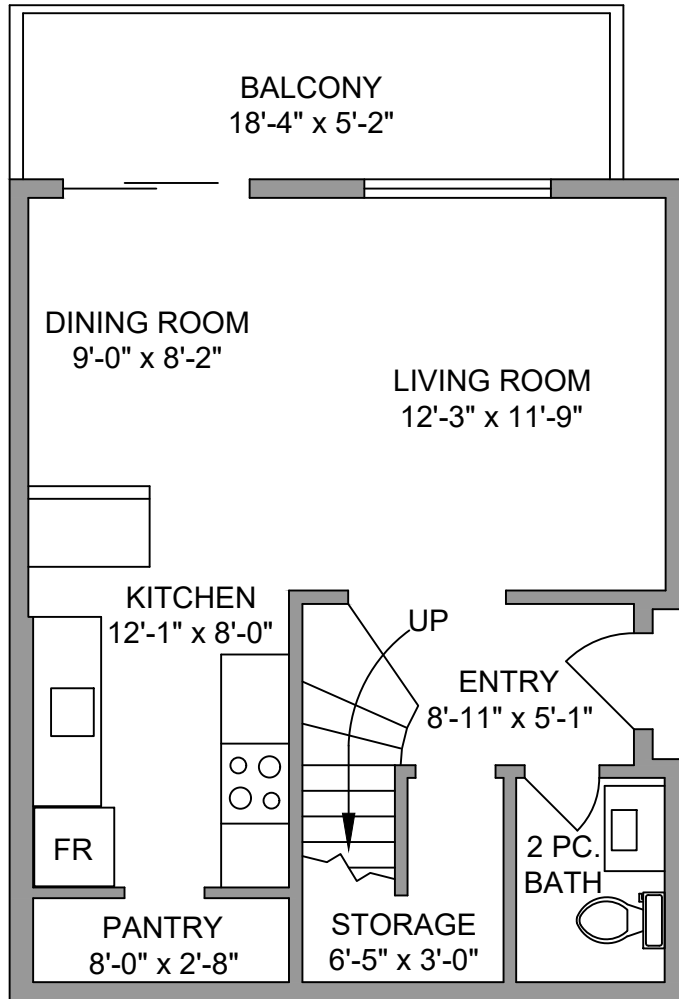


MAIN FLOOR

513 SQ. FT.

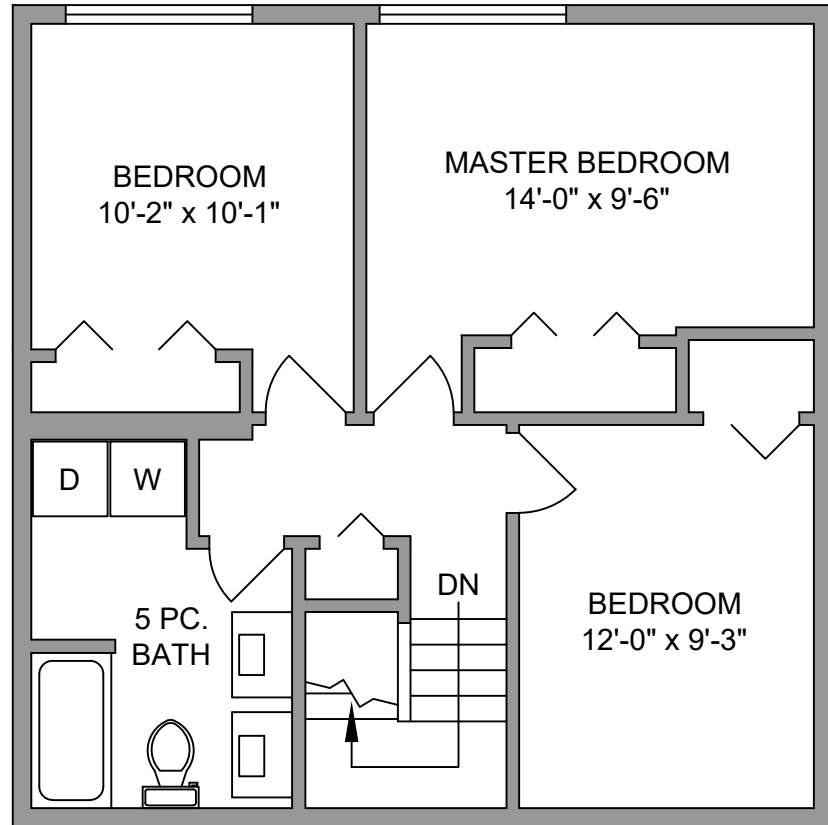
8'-0" CEILING HEIGHT



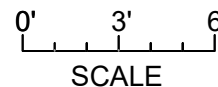
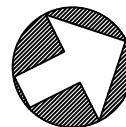
UPPER FLOOR

633 SQ. FT.

8'-0" CEILING HEIGHT



NORTH



UNIT 10 - 840 CRAIGFLOWER ROAD		
OCTOBER 11, 2018		
PREPARED FOR THE EXCLUSIVE USE OF ELIAS MAVRIKOS		
PLANS MAY NOT BE 100% ACCURATE, IF CRITICAL BUYER TO VERIFY.		
FLOOR	AREA (SQ. FT.)	
	FINISHED	BALCONY
MAIN	513	95
UPPER	633	-
TOTAL	1146	95



250-884-9753
matt@propermeasure.com
www.propermeasure.com

**PEMBERTON
HOLMES**

• ESTABLISHED 1887 •