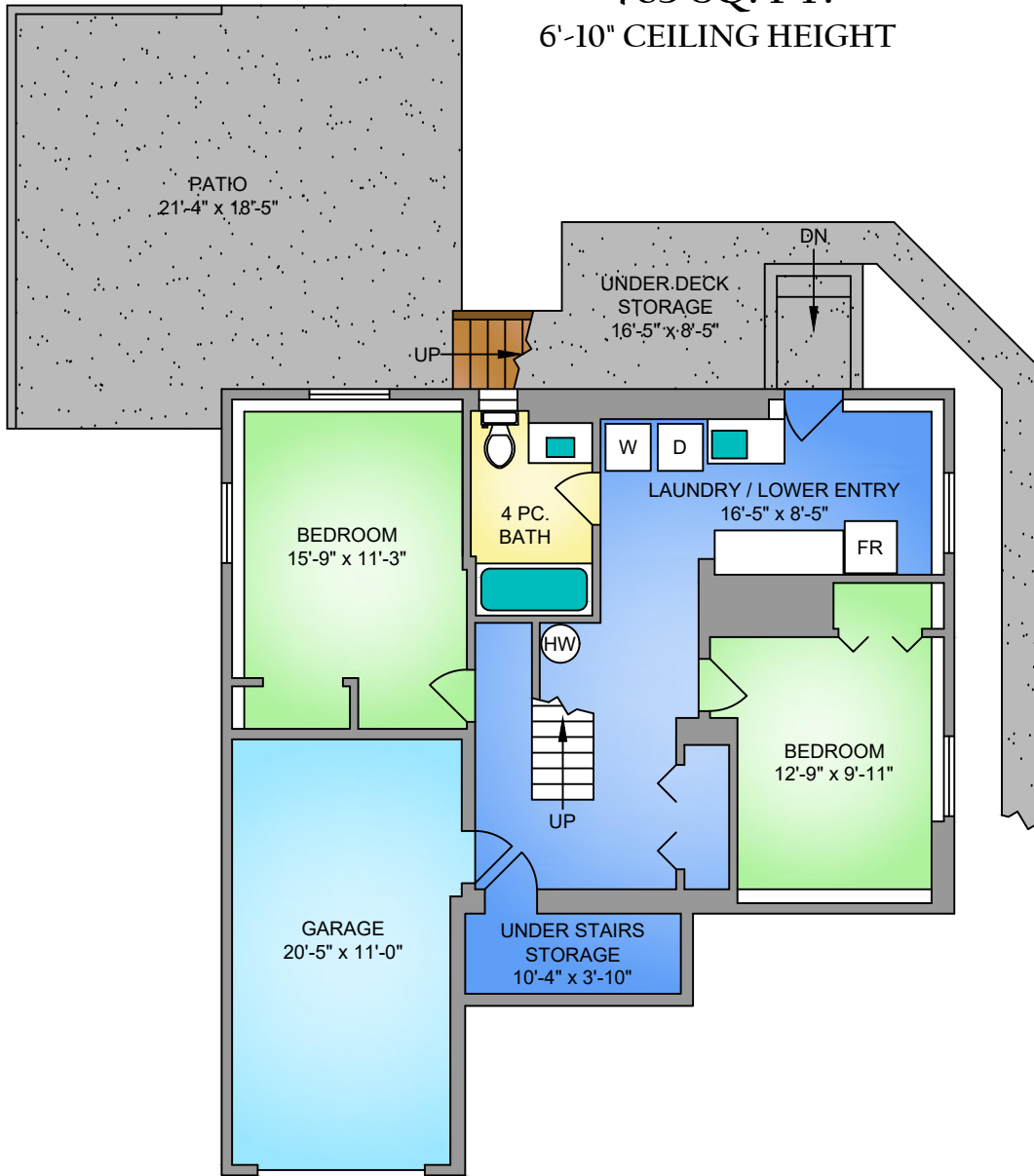


LOWER FLOOR

785 SQ. FT.

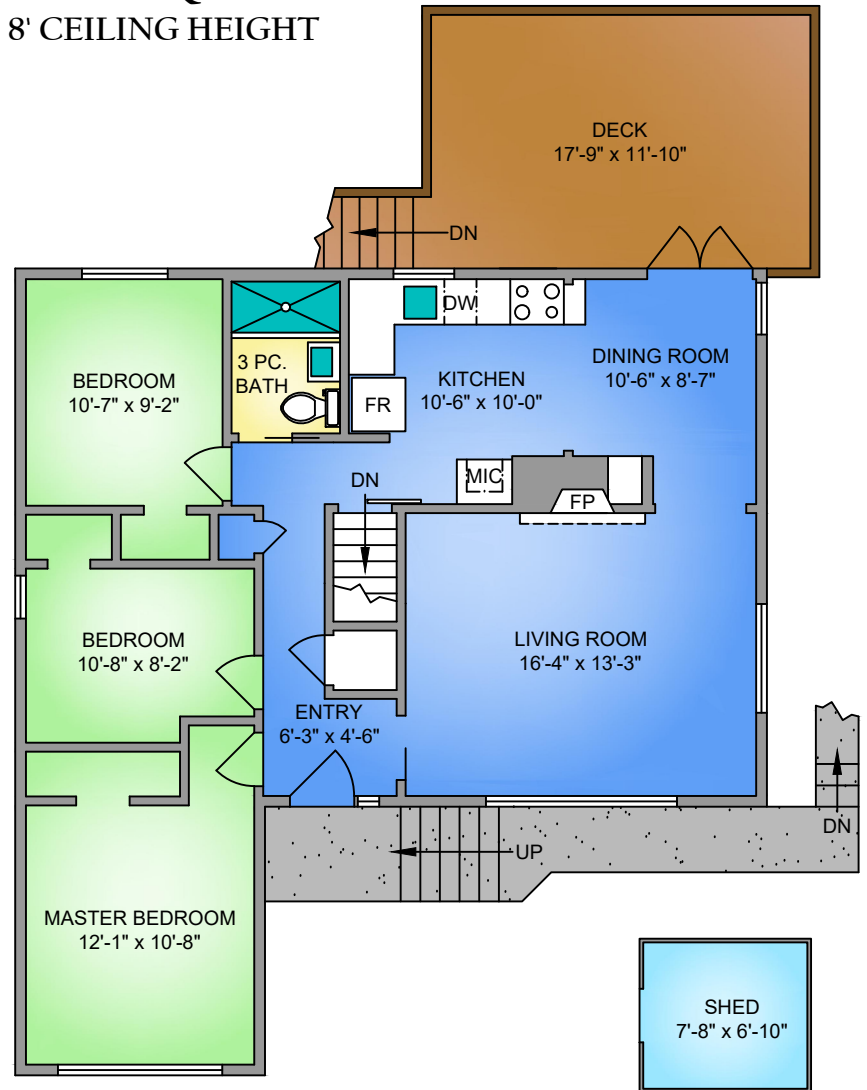
6'-10" CEILING HEIGHT



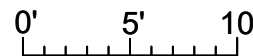
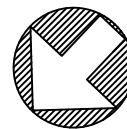
MAIN FLOOR

1028 SQ. FT.

8' CEILING HEIGHT



NORTH



SCALE

3929 HOBBS STREET OCTOBER 28, 2019 PREPARED FOR THE EXCLUSIVE USE OF ELIAS MAVRIKOS PLANS MAY NOT BE 100% ACCURATE, IF CRITICAL BUYER TO VERIFY.			
FLOOR	AREA (SQ. FT.)		
	FINISHED	GARAGE	DECK / PATIO
MAIN	1028	-	210
LOWER	785	242	405
TOTAL	1813	242	615