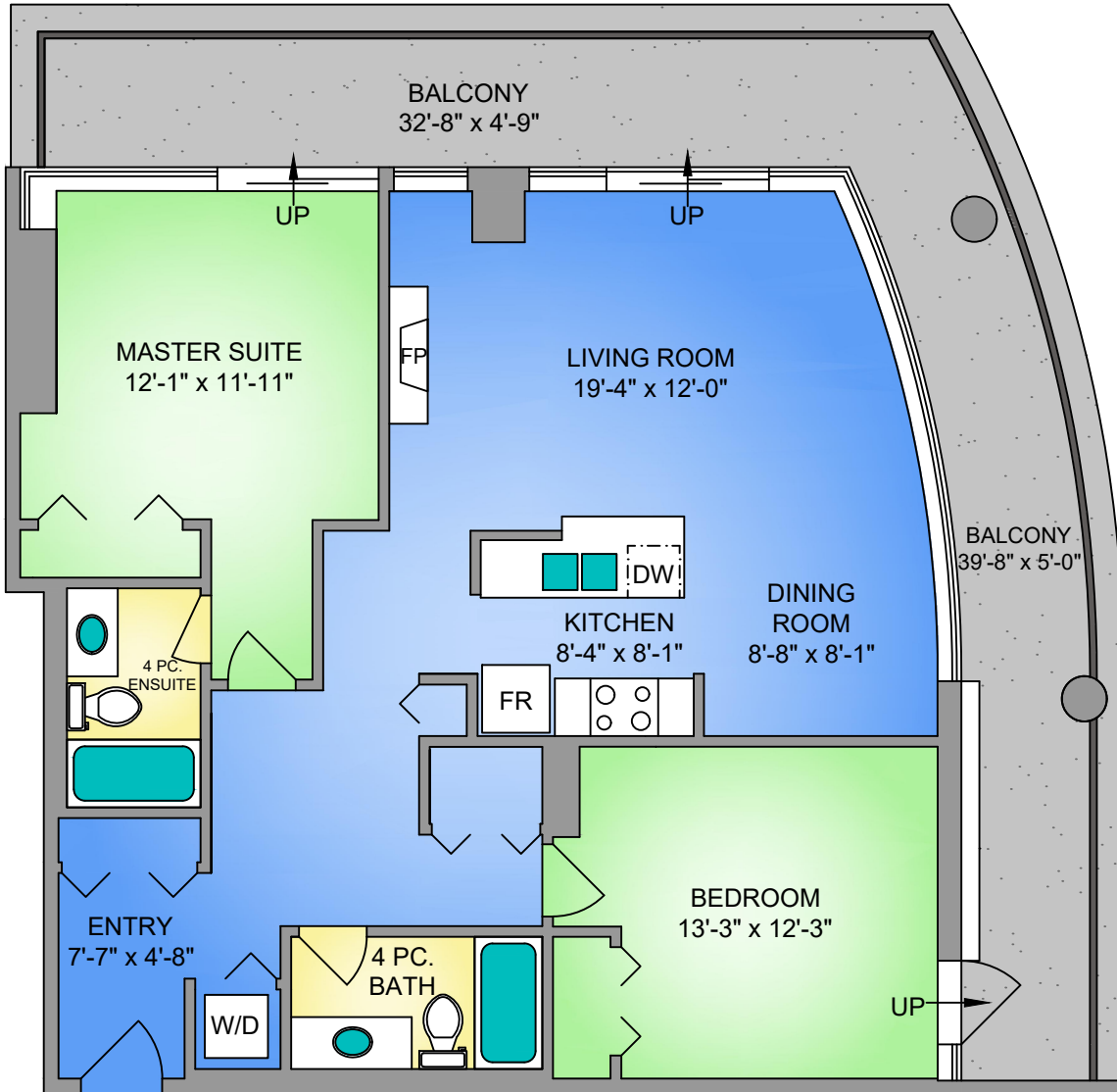
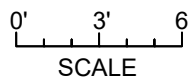
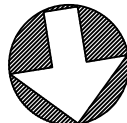


UNIT 1208 - 845 YATES STREET
1121 SQ. FT.
9'-4" CEILING HEIGHT



NORTH



UNIT 1208 - 845 YATES STREET MAY 11, 2020		
PREPARED FOR THE EXCLUSIVE USE OF ELIAS MAVRIKOS PLANS MAY NOT BE 100% ACCURATE, IF CRITICAL BUYER TO VERIFY.		
FLOOR	AREA (SQ. FT.)	
	FINISHED	BALCONY
TWELFTH	1121	315



250-884-9753
 matt@propermeasure.com
 www.propermeasure.com