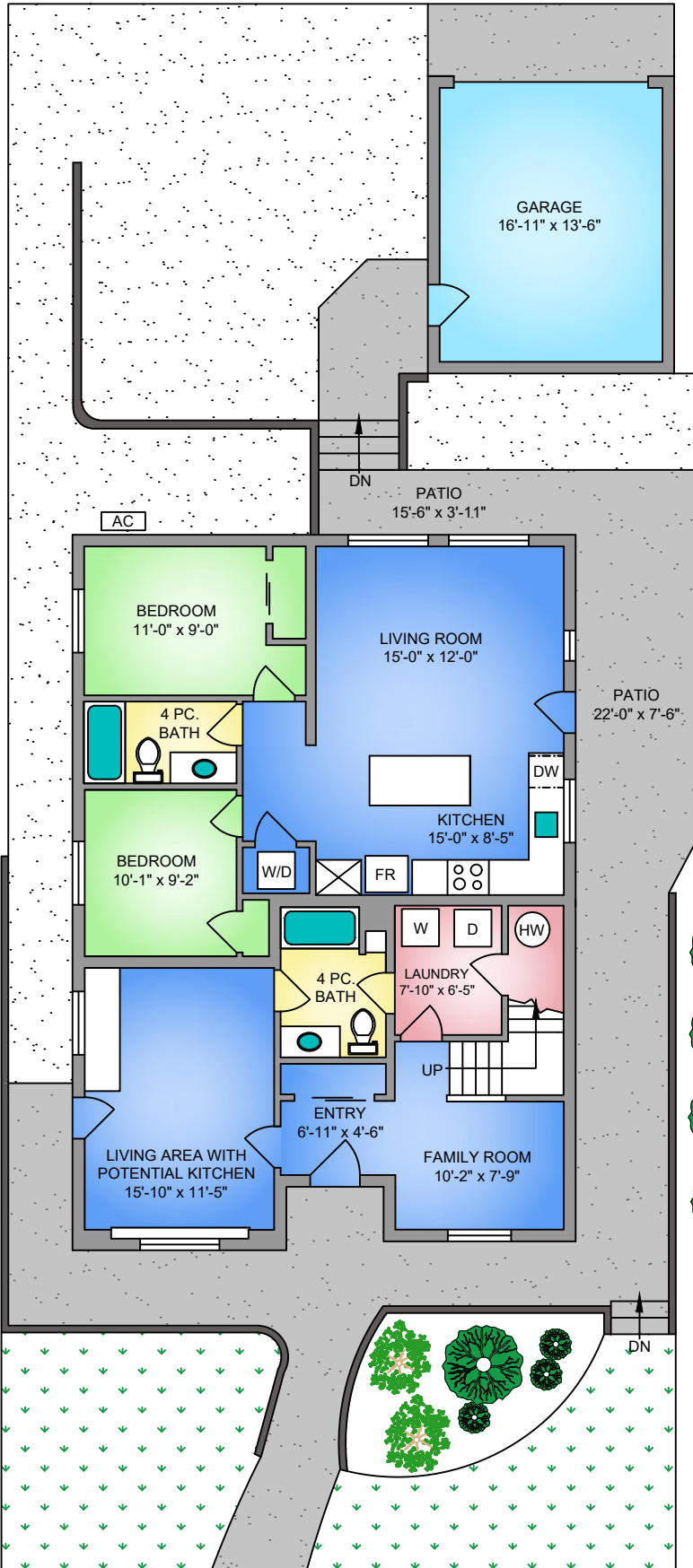
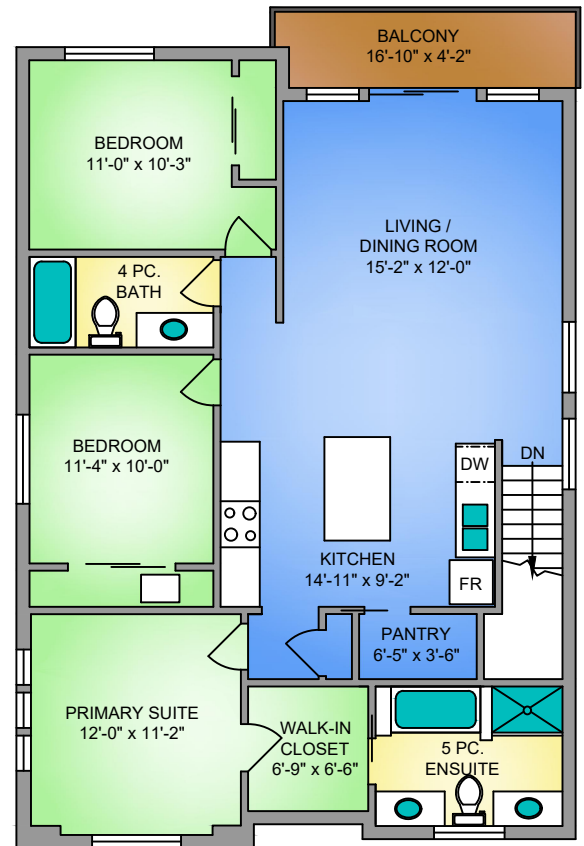


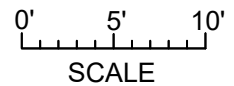
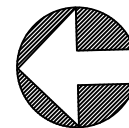
MAIN FLOOR
1287 SQ. FT.
9' CEILING HEIGHT



UPPER FLOOR
1271 SQ. FT.
9' CEILING HEIGHT



NORTH



925 BANK STREET
 SEPTEMBER 17, 2020
 PREPARED FOR THE EXCLUSIVE USE OF ELI MAVRIKOS
 PLANS MAY NOT BE 100% ACCURATE, IF CRITICAL BUYER TO VERIFY.

| FLOOR | AREA (SQ. FT.) | | |
|--------------|----------------|------------|-----------------|
| | FINISHED | GARAGE | PATIO / BALCONY |
| MAIN | 1271 | 268 | 66 |
| LOWER | 1287 | - | 226 |
| TOTAL | 2558 | 268 | 292 |



250-884-9753
 matt@propermeasure.com
 www.propermeasure.com