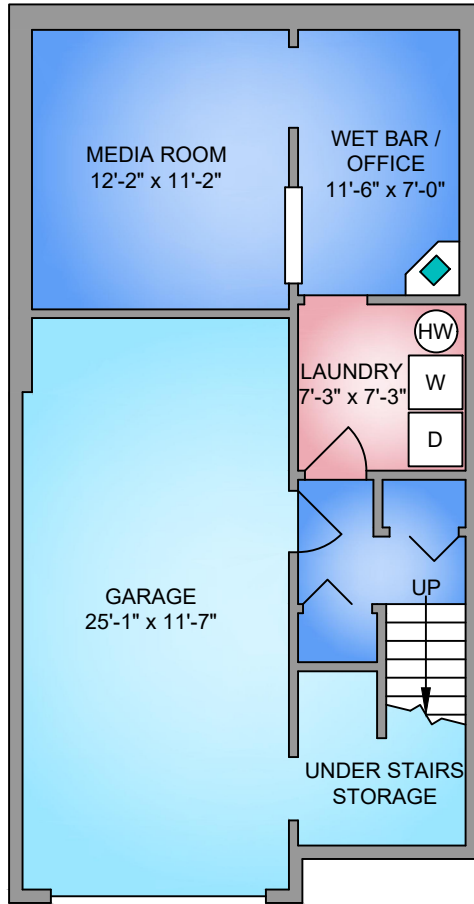
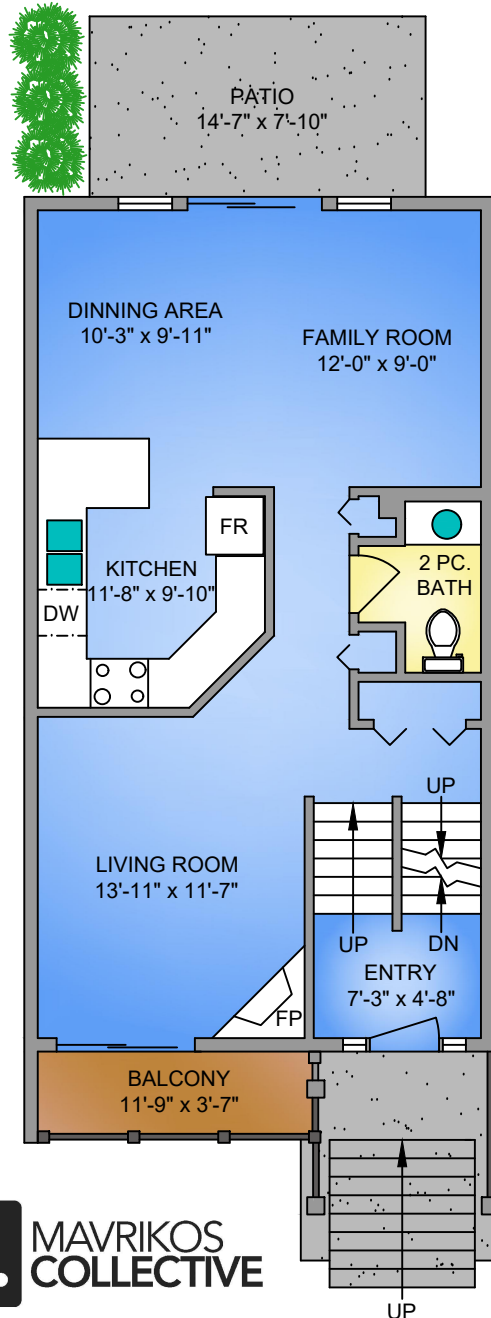


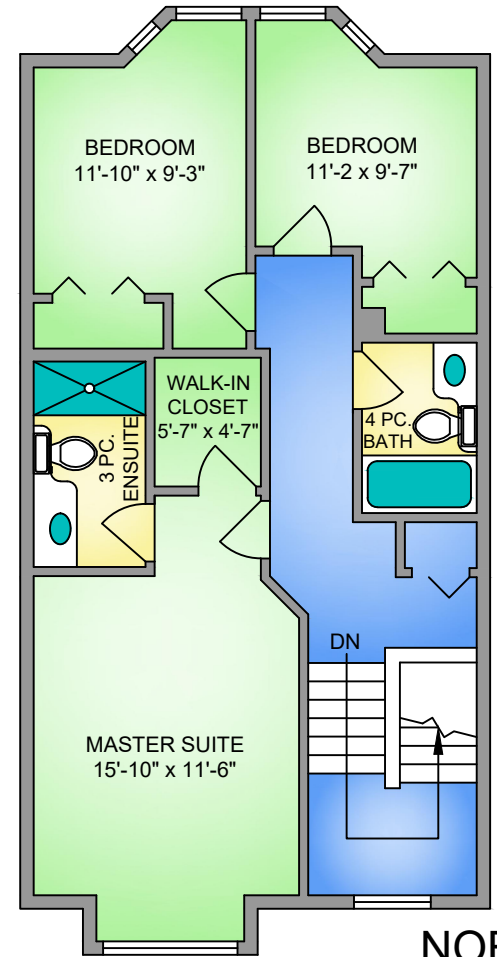
**LOWER FLOOR**  
394 SQ. FT.  
8' CEILING HEIGHT



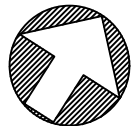
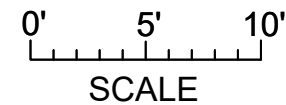
**MAIN FLOOR**  
728 SQ. FT.  
8' CEILING HEIGHT



**UPPER FLOOR**  
761 SQ. FT.  
8' CEILING HEIGHT



NORTH



UNIT 44 - 486 ROYAL BAY DRIVE  
JANUARY 27, 2021  
PREPARED FOR THE EXCLUSIVE USE OF ELI MAVRIKOS  
PLANS MAY NOT BE 100% ACCURATE, IF CRITICAL BUYER TO VERIFY.

FLOOR	AREA (SQ. FT.)		
	FINISHED	GARAGE	DECK / PATIO
MAIN	728	-	156
LOWER	394	302	-
UPPER	761	-	-
TOTAL	1883	302	156



250-884-9753  
matt@propermeasure.com  
www.propermeasure.com