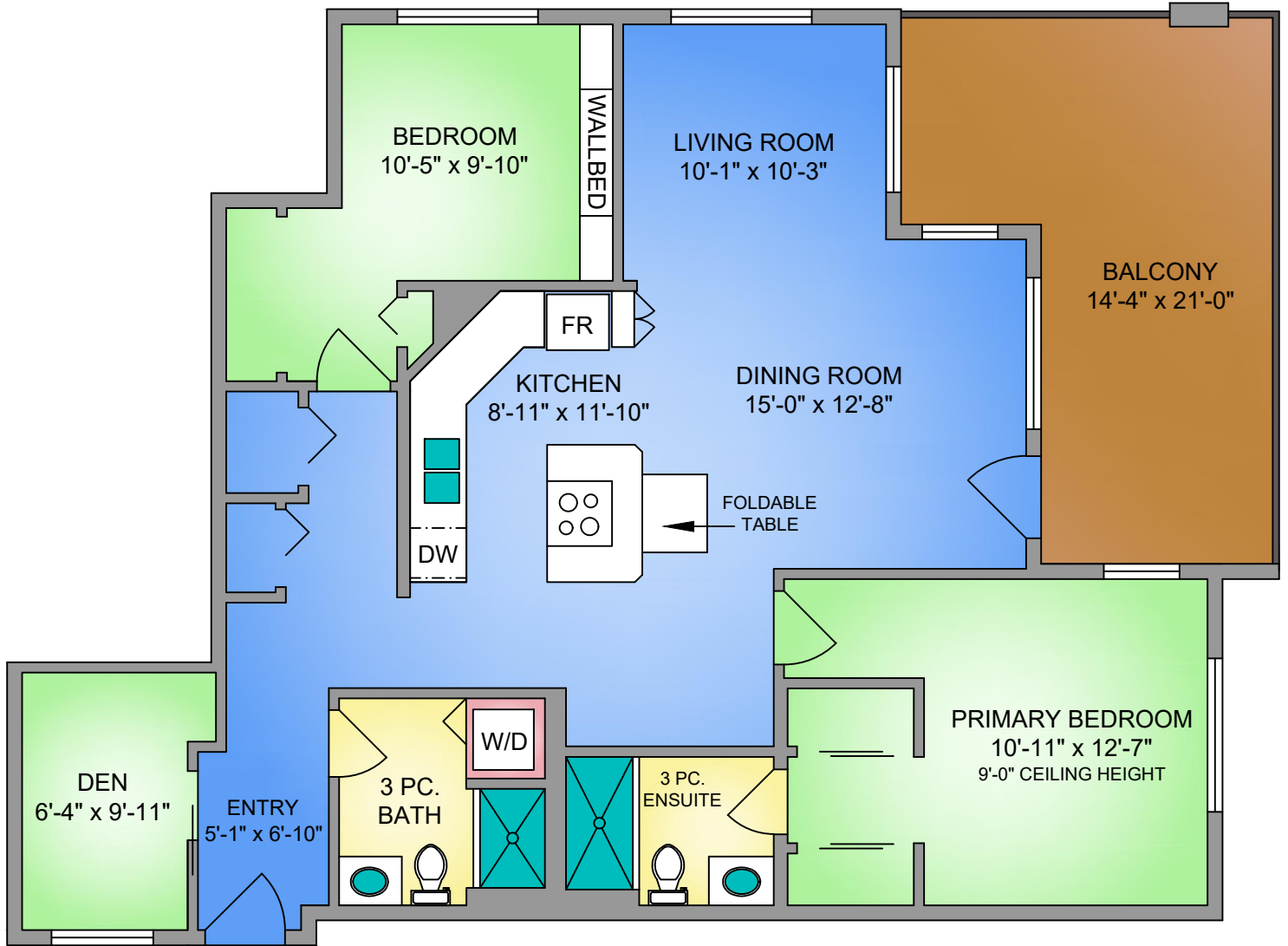
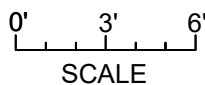
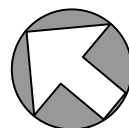


UNIT 604 - 6609 GOODMERE ROAD
1189 SQ. FT.
 10'-6" CEILING HEIGHT



NORTH



UNIT 604 - 6609 GOODMERE ROAD		
FEBRUARY 3, 2022		
PREPARED FOR THE EXCLUSIVE USE OF ELI MAVRIKOS		
PLANS MAY NOT BE 100% ACCURATE, IF CRITICAL BUYER TO VERIFY.		
FLOOR	AREA (SQ. FT.)	
	FINISHED	BALCONY
SIXTH	1189	230



250-884-9753
 matt@propermeasure.com
 www.propermeasure.com