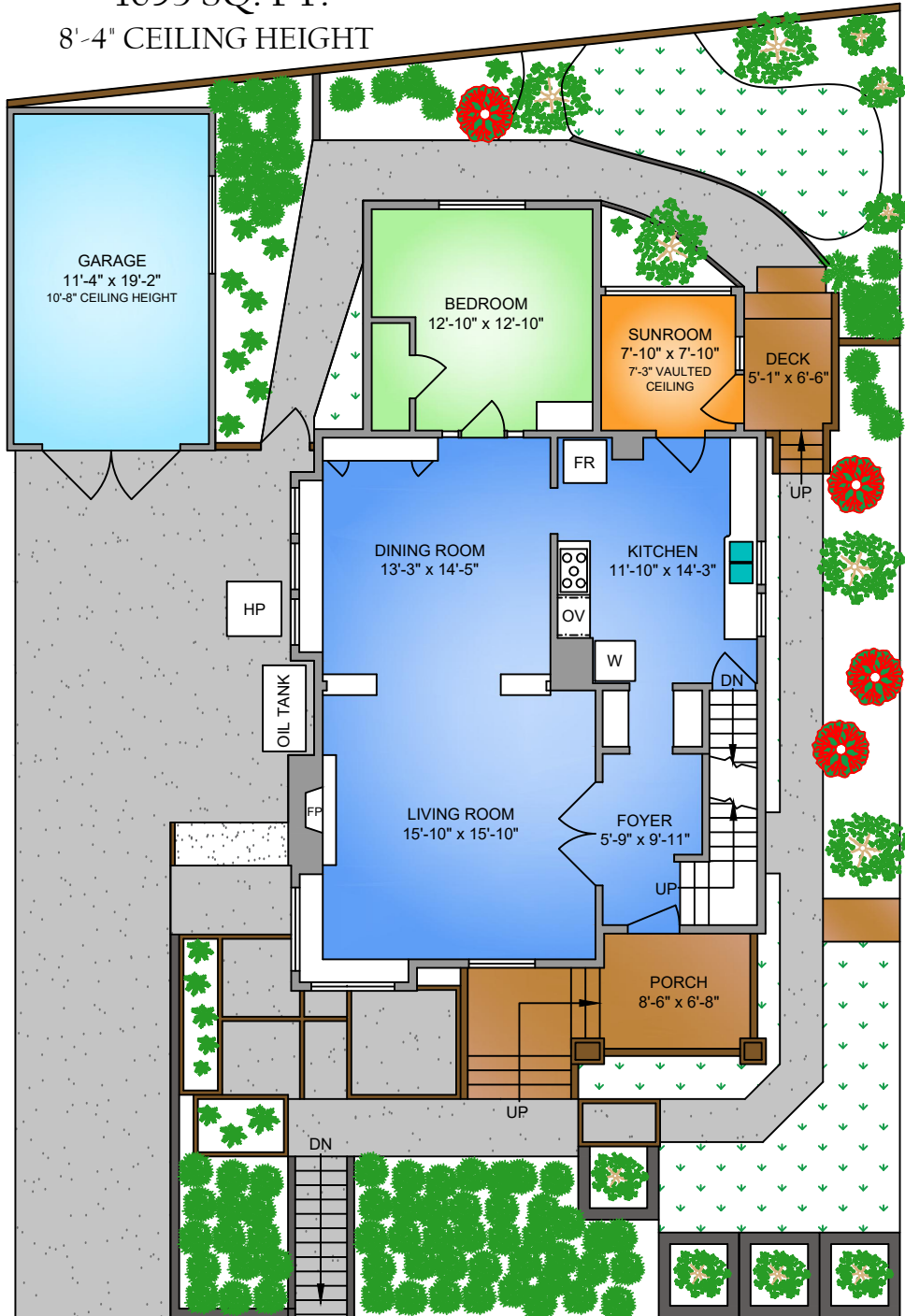


MAIN FLOOR

1093 SQ. FT.

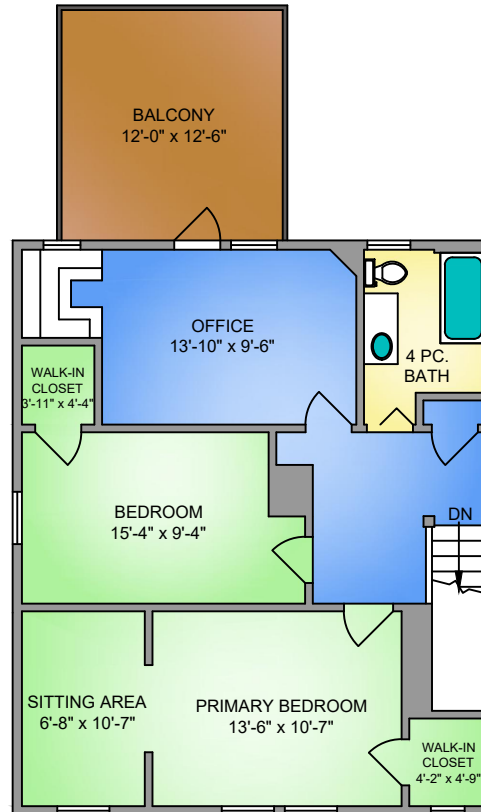
8'-4" CEILING HEIGHT



UPPER FLOOR

817 SQ. FT.

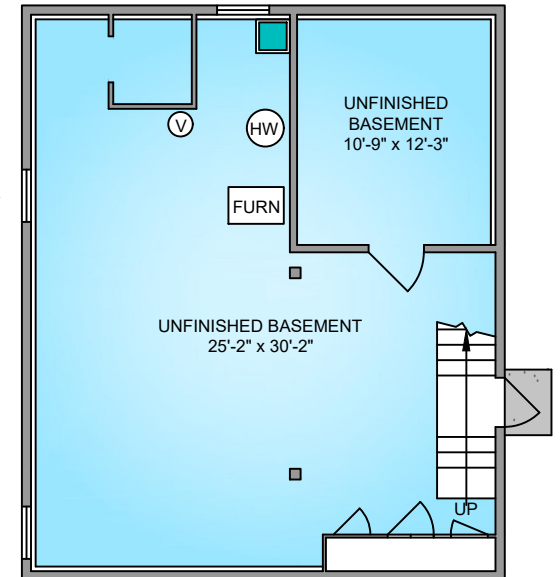
8' CEILING HEIGHT



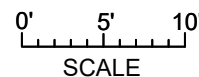
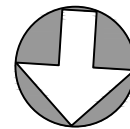
LOWER FLOOR

817 SQ. FT.

7' CEILING HEIGHT



NORTH



1529 VINING STREET

FEBRUARY 18, 2022

PREPARED FOR THE EXCLUSIVE USE OF ELIAS MAVRIKOS
PLANS MAY NOT BE 100% ACCURATE, IF CRITICAL BUYER TO VERIFY.

FLOOR	AREA (SQ. FT.)			
	FINISHED	UNFINISHED	GARAGE	BALCONY
MAIN	1093	-	241	33
UPPER	817	-	-	150
LOWER	-	817	-	-
TOTAL	1910	817	241	150



250-884-9753
matt@propermeasure.com
www.propermeasure.com