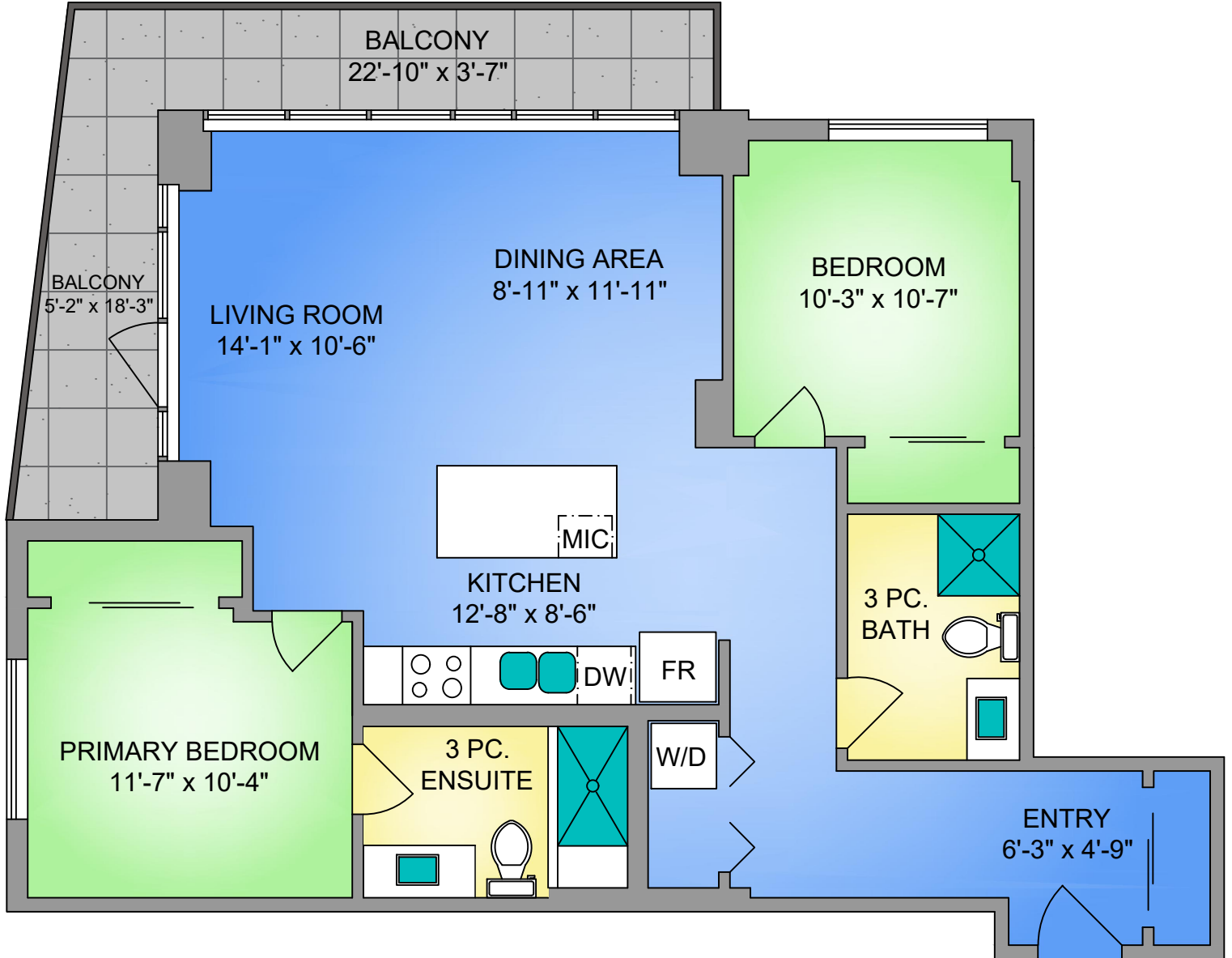


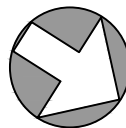
**UNIT 301 - 373 TYEE ROAD**

**985 SQ. FT.**

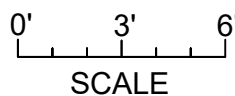
**9' CEILING HEIGHT**



**NORTH**



250-884-9753  
 matt@propermeasure.com  
 www.propermeasure.com



UNIT 301 - 373 TYEE ROAD JANUARY 11, 2023		
PREPARED FOR THE EXCLUSIVE USE OF ELI MAVRIKOS PLANS MAY NOT BE 100% ACCURATE, IF CRITICAL BUYER TO VERIFY.		
FLOOR	AREA (SQ. FT.)	
	FINISHED	BALCONY
THIRD	985	146