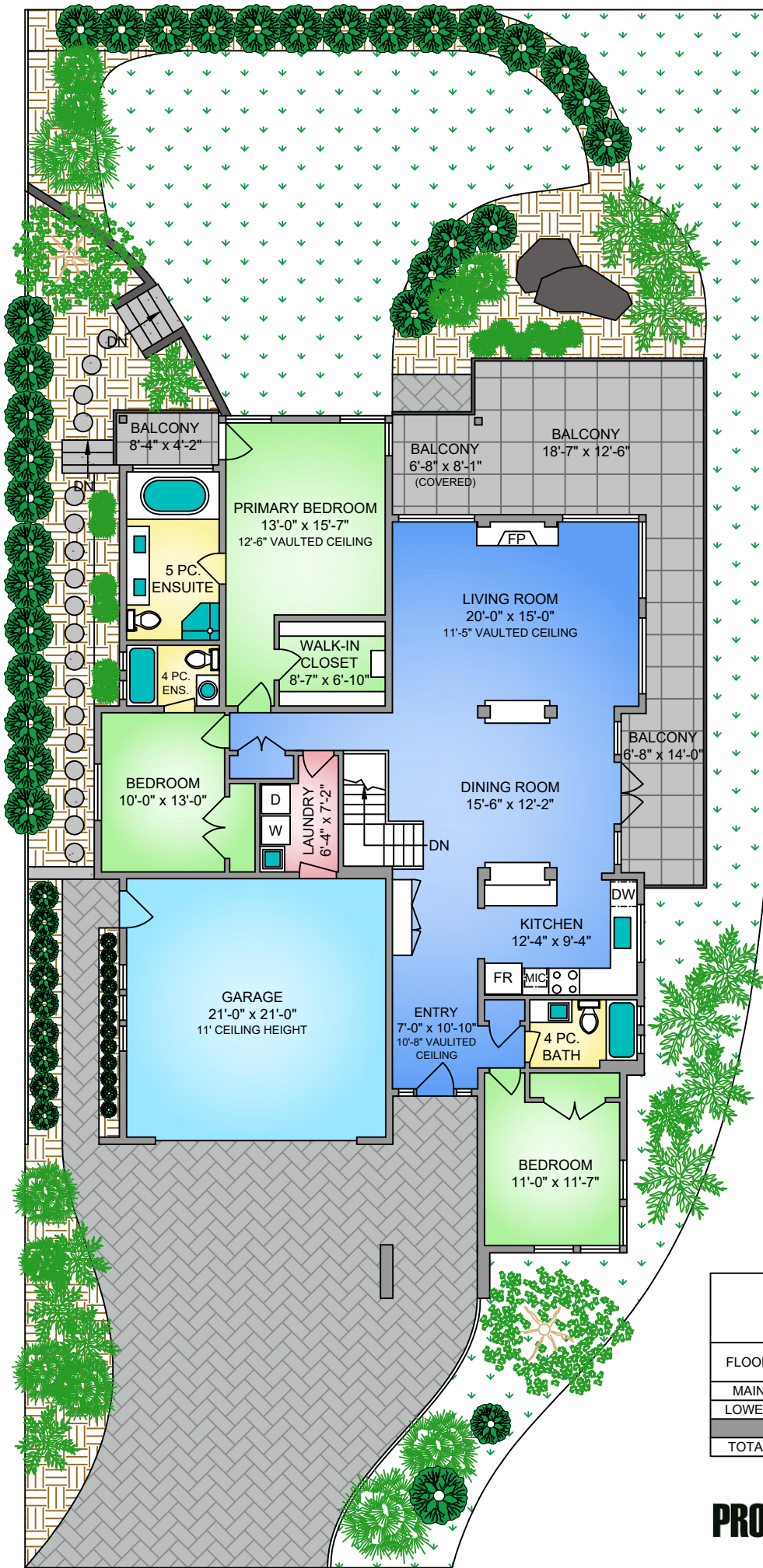
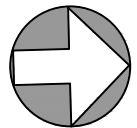
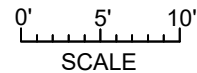


**MAIN FLOOR**  
**1930 SQ. FT.**  
**9' CEILING HEIGHT**



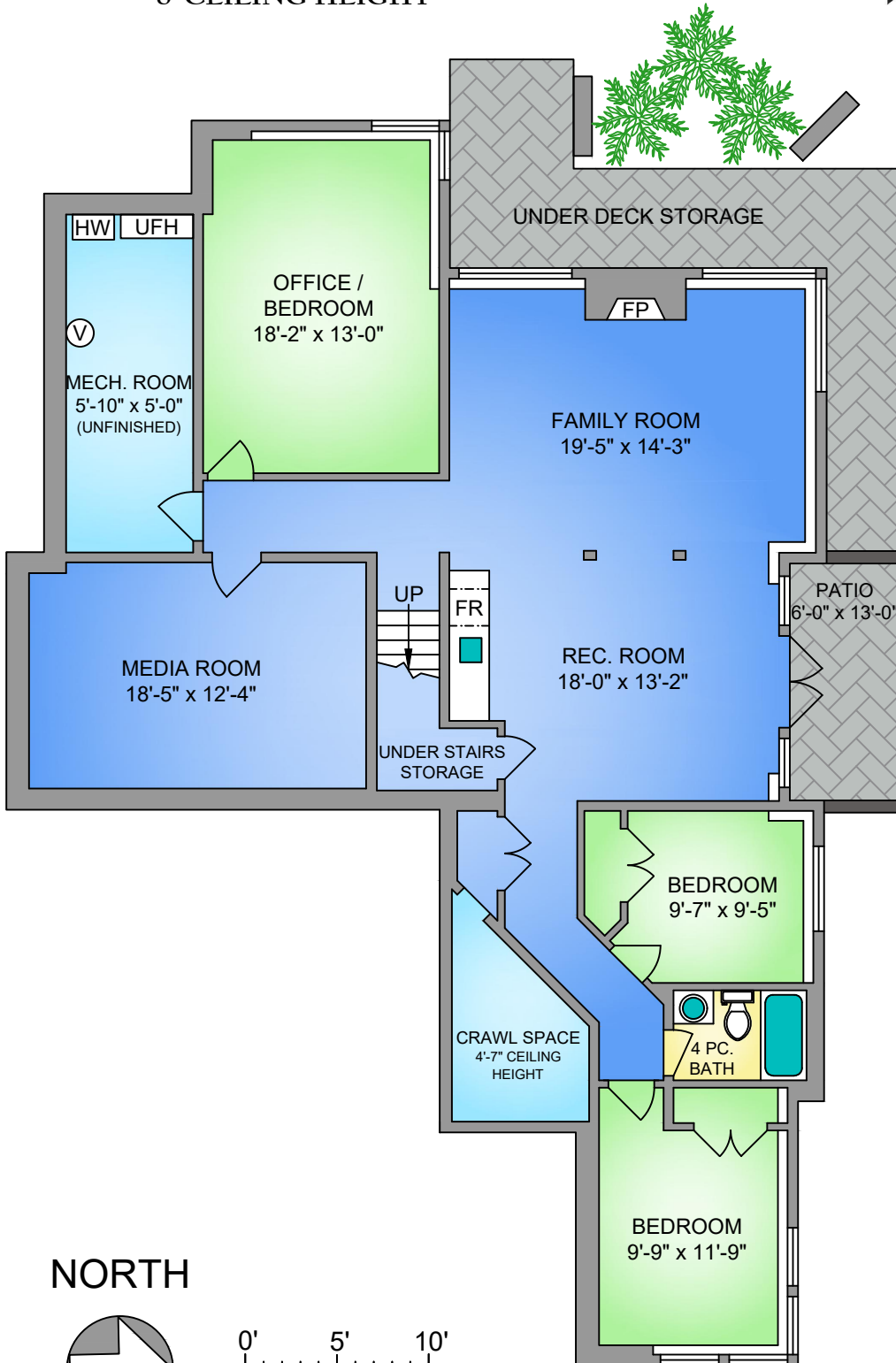
**NORTH**



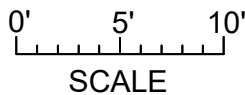
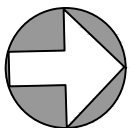
6904 MCKENNA COURT  
 OCTOBER 26, 2023  
 PREPARED FOR THE EXCLUSIVE USE OF ELI MAVRIKOS  
 PLANS MAY NOT BE 100% ACCURATE, IF CRITICAL BUYER TO VERIFY.

FLOOR	AREA (SQ. FT.)			
	FINISHED	UNFINISHED	GARAGE	DECK / PATIO
MAIN	1930	-	467	486
LOWER	1691	159	-	77
<b>TOTAL</b>	<b>3621</b>	<b>159</b>	<b>467</b>	<b>563</b>

**LOWER FLOOR**  
**1691 SQ. FT.**  
**8' CEILING HEIGHT**



**NORTH**



250-884-9753  
 matt@propermeasure.com  
 www.propermeasure.com

6904 MCKENNA COURT				
OCTOBER 26, 2023				
PREPARED FOR THE EXCLUSIVE USE OF ELI MAVRIKOS				
PLANS MAY NOT BE 100% ACCURATE, IF CRITICAL BUYER TO VERIFY.				
FLOOR	AREA (SQ. FT.)			
	FINISHED	UNFINISHED	GARAGE	DECK / PATIO
MAIN	1930	-	467	486
LOWER	1691	159	-	77
<b>TOTAL</b>	<b>3621</b>	<b>159</b>	<b>467</b>	<b>563</b>