

3365 MAIN FLOOR

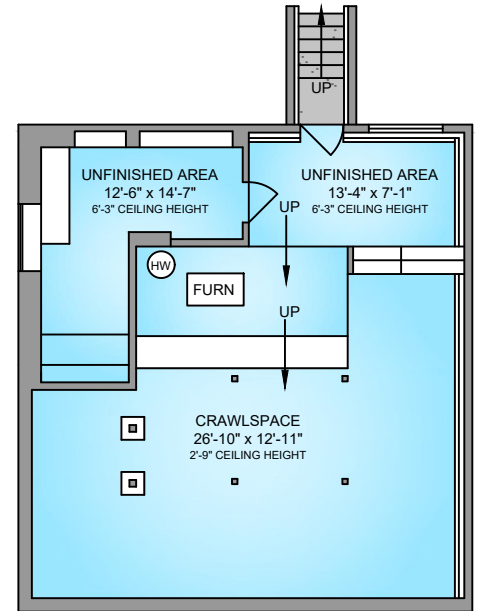
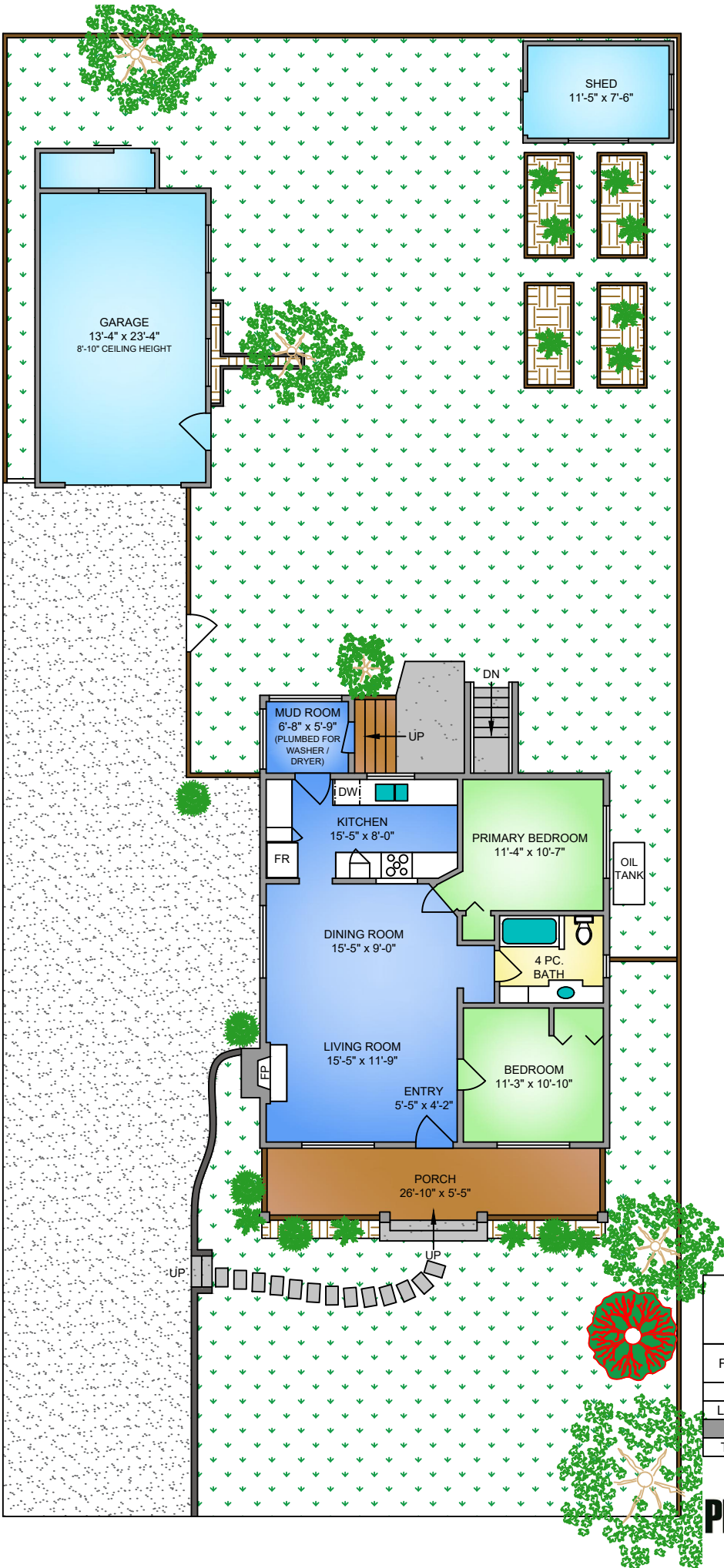
898 SQ. FT.

8' CEILING HEIGHT

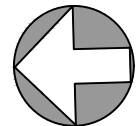
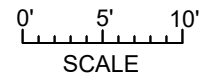
LOWER FLOOR

898 SQ. FT.

2'-9" - 6'-3" CEILING HEIGHT



NORTH



3365 CEDAR HILL ROAD
 FEBRUARY 13, 2023
 PREPARED FOR THE EXCLUSIVE USE OF ELI MAVRIKOS
 PLANS MAY NOT BE 100% ACCURATE, IF CRITICAL BUYER TO VERIFY.

FLOOR	AREA (SQ. FT.)			
	FINISHED	UNFINISHED	DET. GARAGE	PORCH
MAIN	898	-	342	147
LOWER	-	898	-	-
TOTAL	898	898	342	147