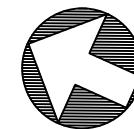


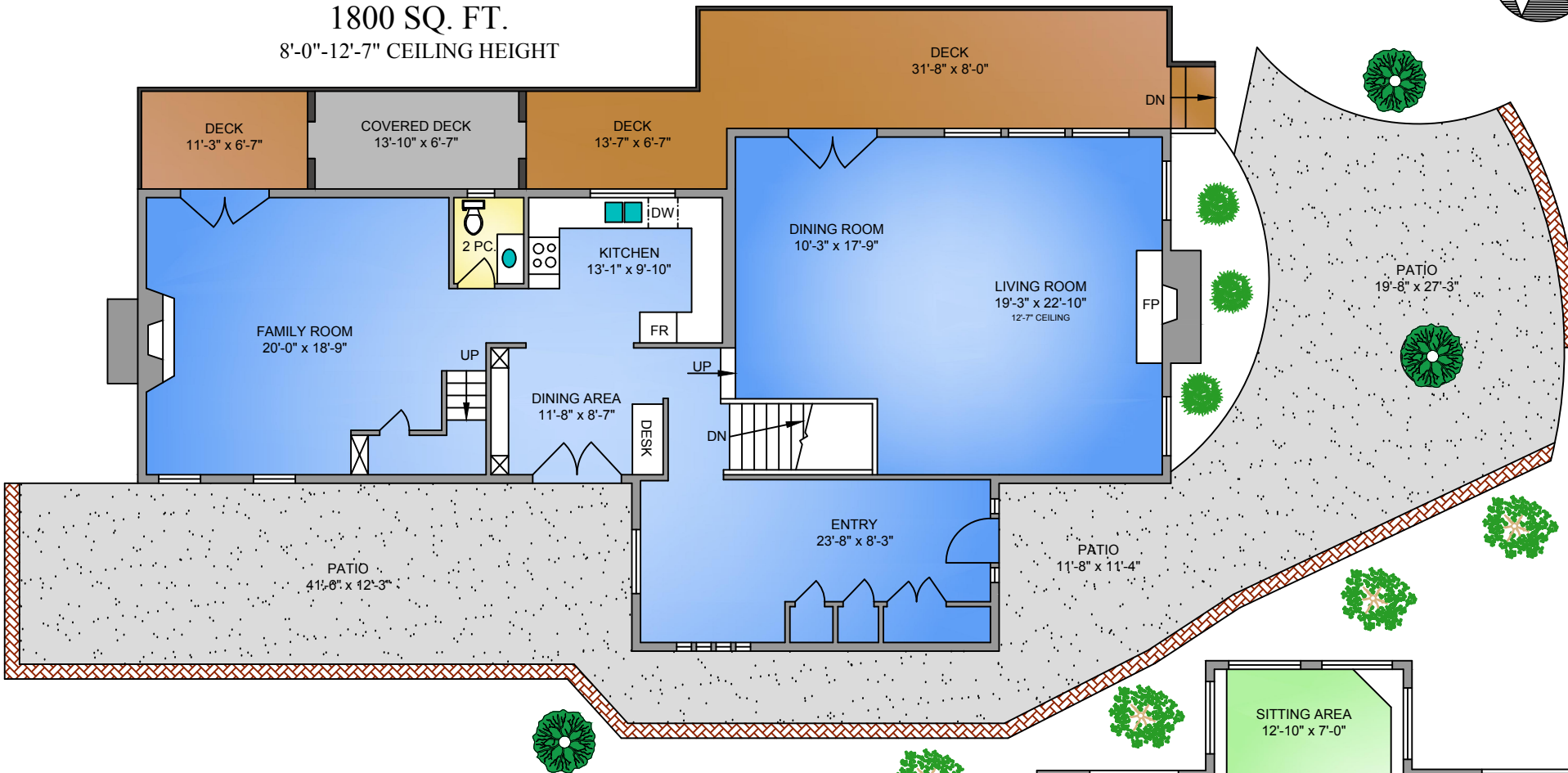
NORTH



## MAIN FLOOR

1800 SQ. FT.

8'-0"-12'-7" CEILING HEIGHT

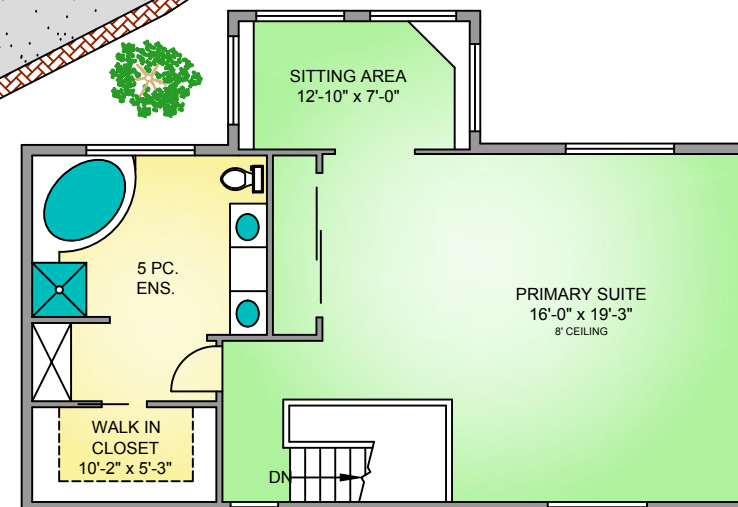


6633 CHISHOLM TRAIL - MAIN HOUSE				
APRIL 12, 2024				
PREPARED FOR THE EXCLUSIVE USE OF MAVRIKOS COLLECTIVE.				
PLANS MAY NOT BE 100% ACCURATE, IF CRITICAL BUYER TO VERIFY.				
FLOOR	TOTAL	AREA (SQ. FT.)		
		FINISHED	DET. GARAGES	DECK / PATIO
MAIN	1800	1800	1203	1925
UPPER	926	926	-	-
LOWER	1637	1637	-	2200
TOTAL	4363	4363	1203	4125

## UPPER FLOOR

926 SQ. FT.

8'-0" CEILING

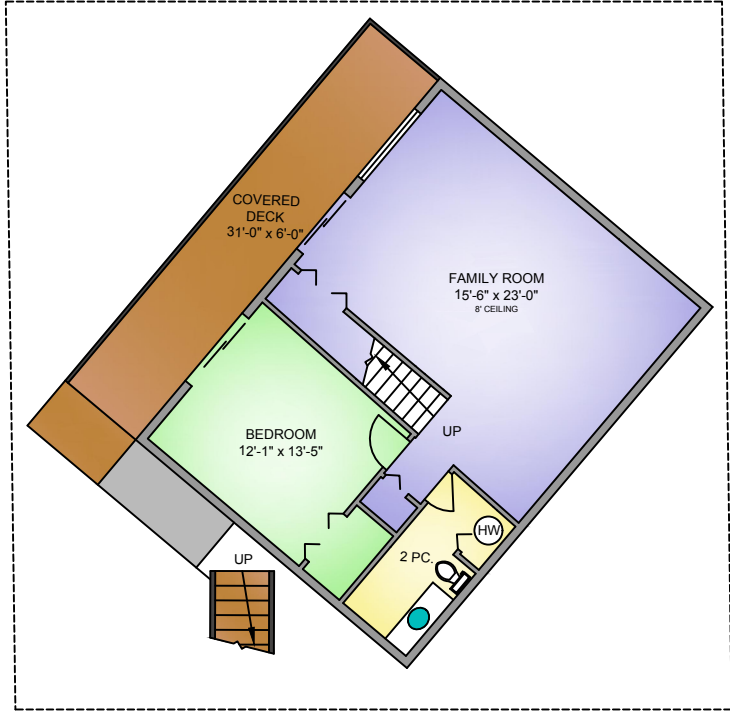
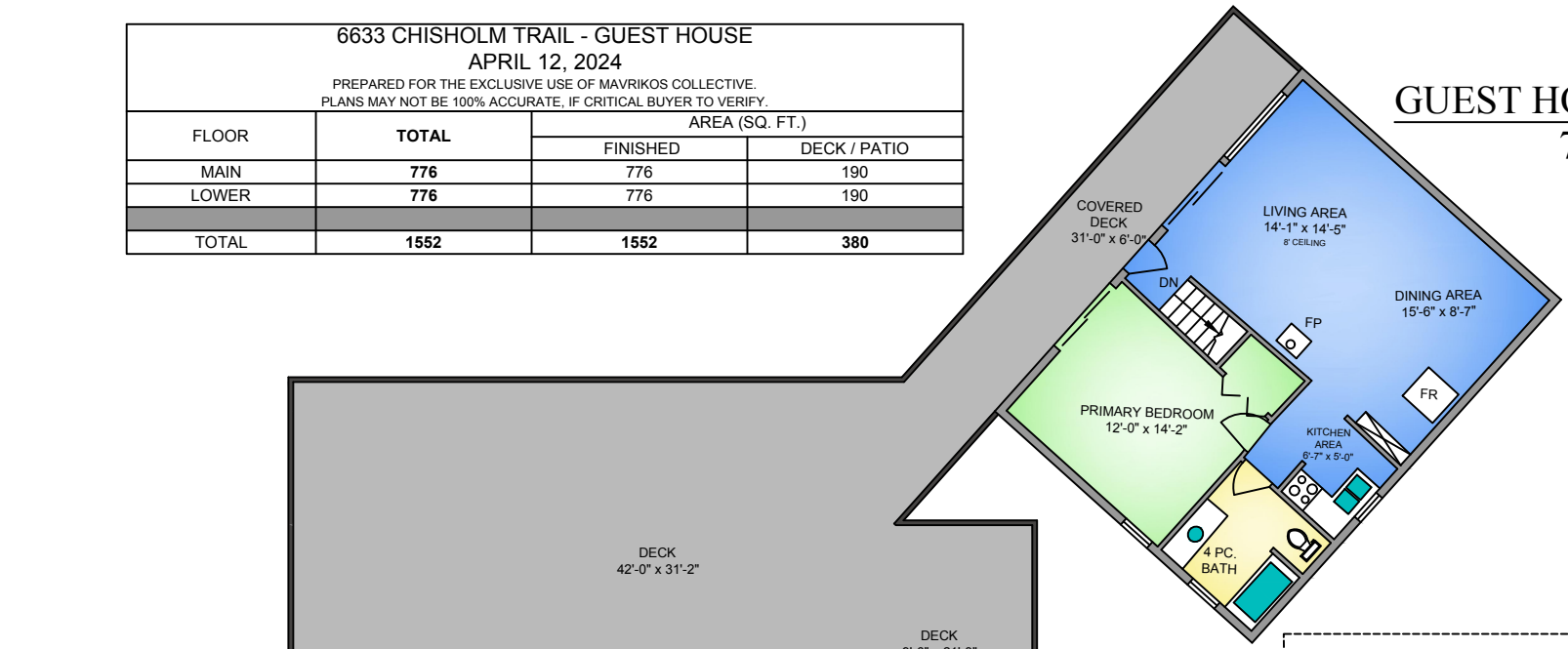


6633 CHISHOLM TRAIL - GUEST HOUSE			
APRIL 12, 2024			
PREPARED FOR THE EXCLUSIVE USE OF MAVRIKOS COLLECTIVE. PLANS MAY NOT BE 100% ACCURATE, IF CRITICAL BUYER TO VERIFY.			
FLOOR	TOTAL	AREA (SQ. FT.)	
		FINISHED	DECK / PATIO
MAIN	776	776	190
LOWER	776	776	190
TOTAL	1552	1552	380

**GUEST HOUSE MAIN FLOOR**

776 SQ. FT.  
8'-0" CEILING

NORTH



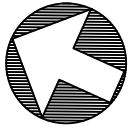
**MAIN HOUSE LOWER FLOOR**

1637 SQ. FT.  
8'-0" CEILING HEIGHT

**GUEST HOUSE LOWER FLOOR**

776 SQ. FT.  
8'-0" CEILING

NORTH



6633 CHISHOLM TRAIL - MAIN HOUSE				
APRIL 12, 2024				
PREPARED FOR THE EXCLUSIVE USE OF MAVRIKOS COLLECTIVE.				
PLANS MAY NOT BE 100% ACCURATE. IF CRITICAL BUYER TO VERIFY.				
FLOOR	TOTAL	AREA (SQ. FT.)		
		FINISHED	DET. GARAGES	DECK / PATIO
MAIN	1800	1800	1203	1925
UPPER	926	926	-	-
LOWER	1637	1637	-	2200
<b>TOTAL</b>	<b>4363</b>	<b>4363</b>	<b>1203</b>	<b>4125</b>