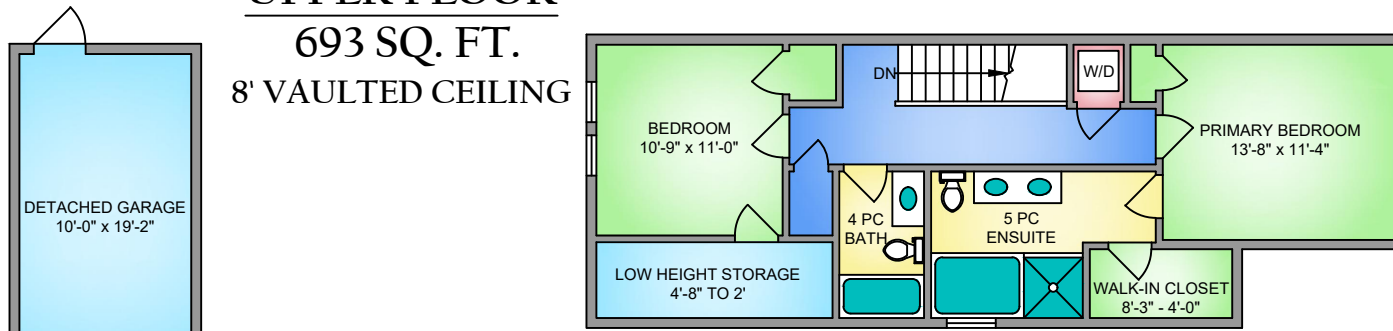
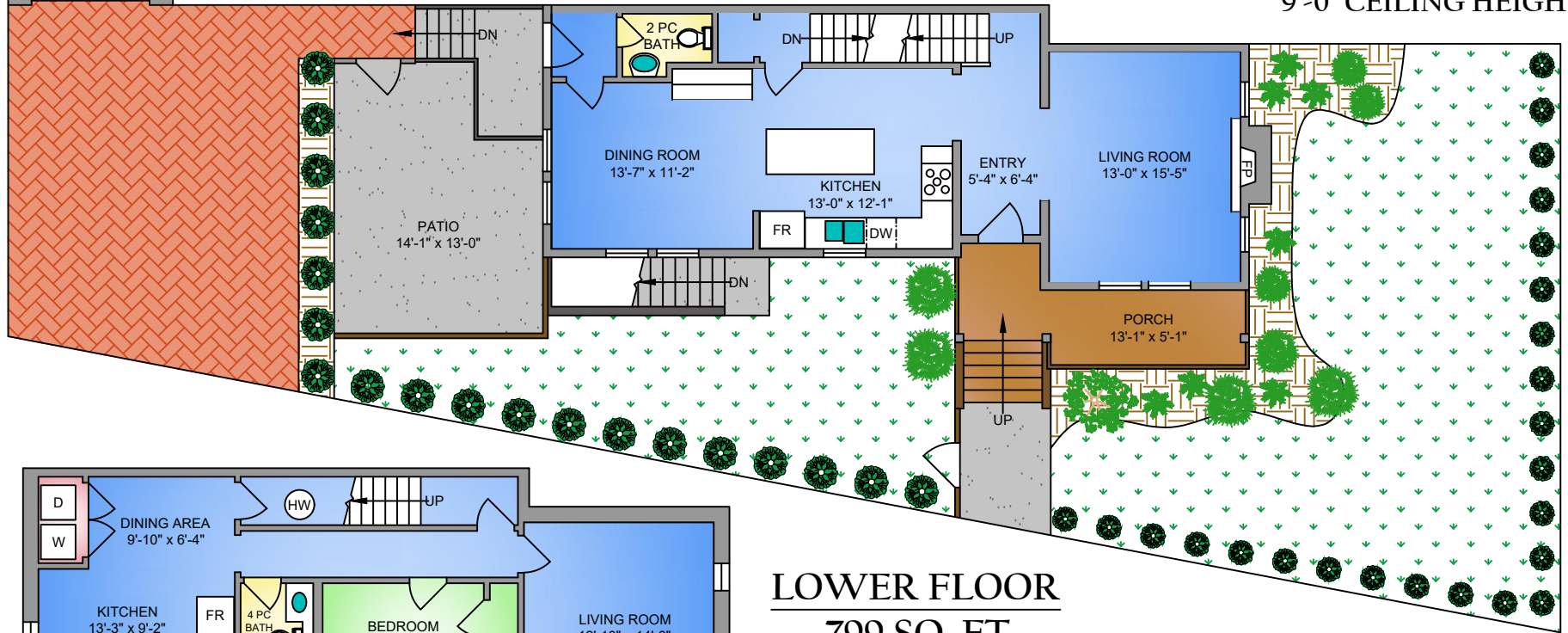


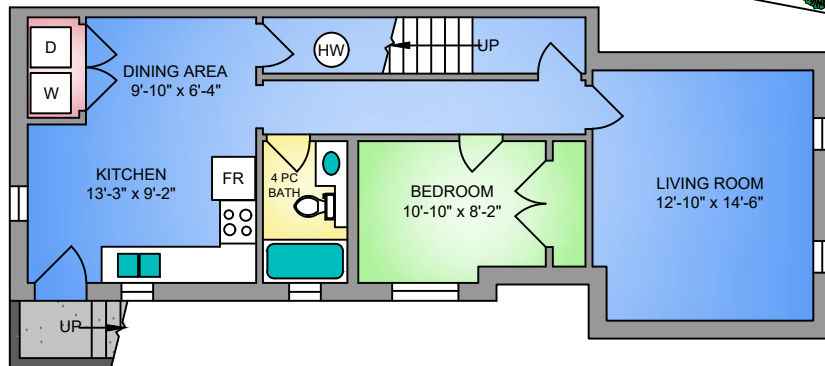
**UPPER FLOOR**  
693 SQ. FT.  
8' VAULTED CEILING



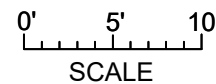
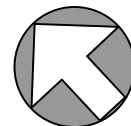
**MAIN FLOOR**  
799 SQ. FT.  
9'-0" CEILING HEIGHT



**LOWER FLOOR**  
799 SQ. FT.  
8'-0" CEILING HEIGHT



NORTH



FLOOR	590 SIMCOE STREET APRIL 1, 2024 PREPARED FOR THE EXCLUSIVE USE OF ELI MAVRIKOS PLANS MAY NOT BE 100% ACCURATE, IF CRITICAL BUYER TO VERIFY.		
	AREA (SQ. FT.)		
	FINISHED	GARAGE	BALCONY / PATIO
MAIN	799	226	354
UPPER	693	-	-
LOWER	799	-	-
<b>TOTAL</b>	<b>2291</b>	<b>226</b>	<b>354</b>