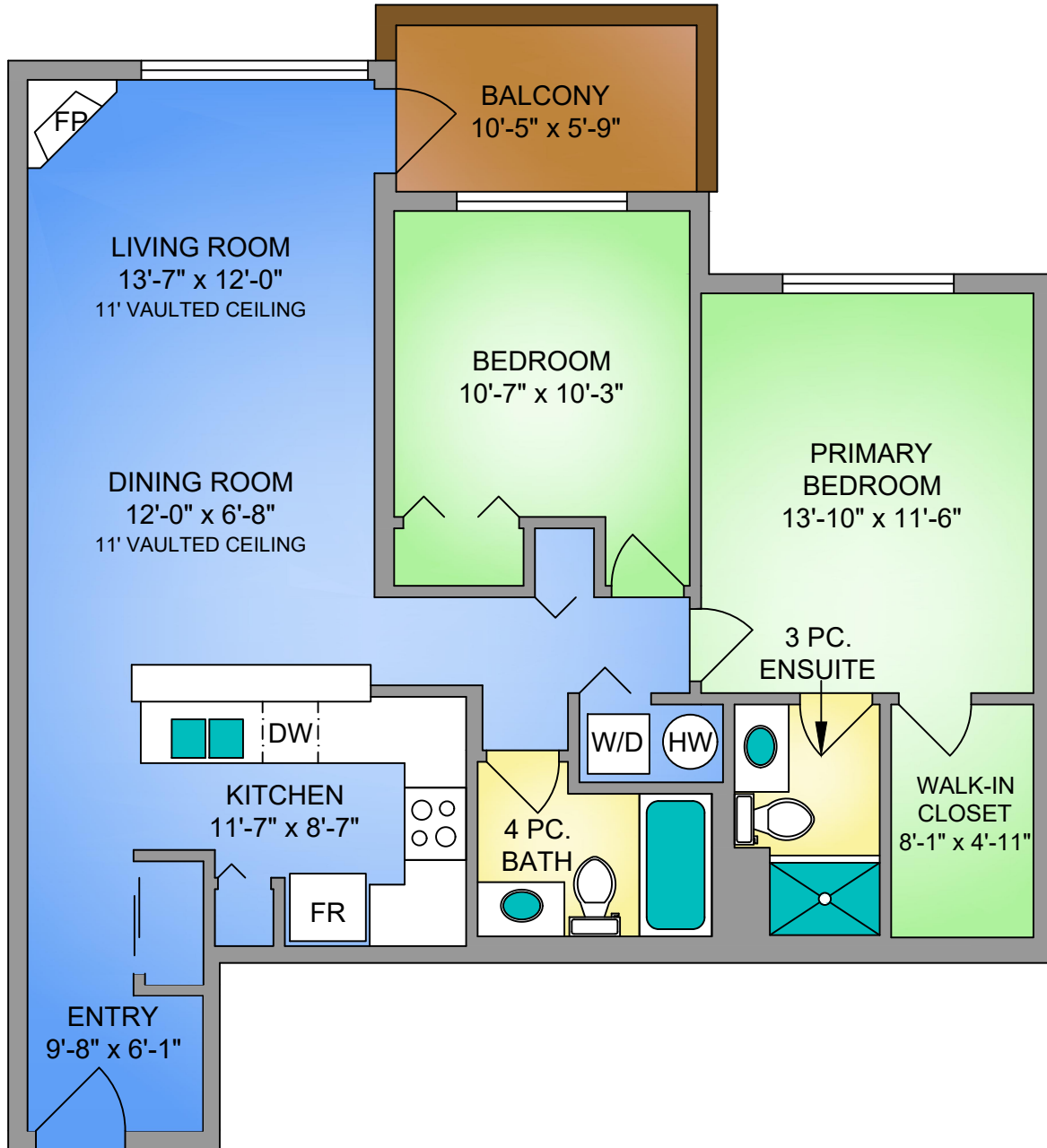


# UNIT 408 E - 1115 CRAIGFLOWER ROAD

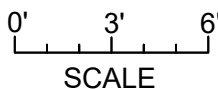
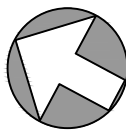
992 SQ. FT.

9' CEILING HEIGHT



UNIT 408 E - 1115 CRAIGFLOWER ROAD		
OCTOBER 16, 2024		
PREPARED FOR THE EXCLUSIVE USE OF ELI MAVRIKOS		
PLANS MAY NOT BE 100% ACCURATE, IF CRITICAL BUYER TO VERIFY.		
FLOOR	AREA (SQ. FT.)	
	FINISHED	BALCONY
FOURTH	992	60

NORTH



250-884-9753  
matt@propermeasure.com  
www.propermeasure.com