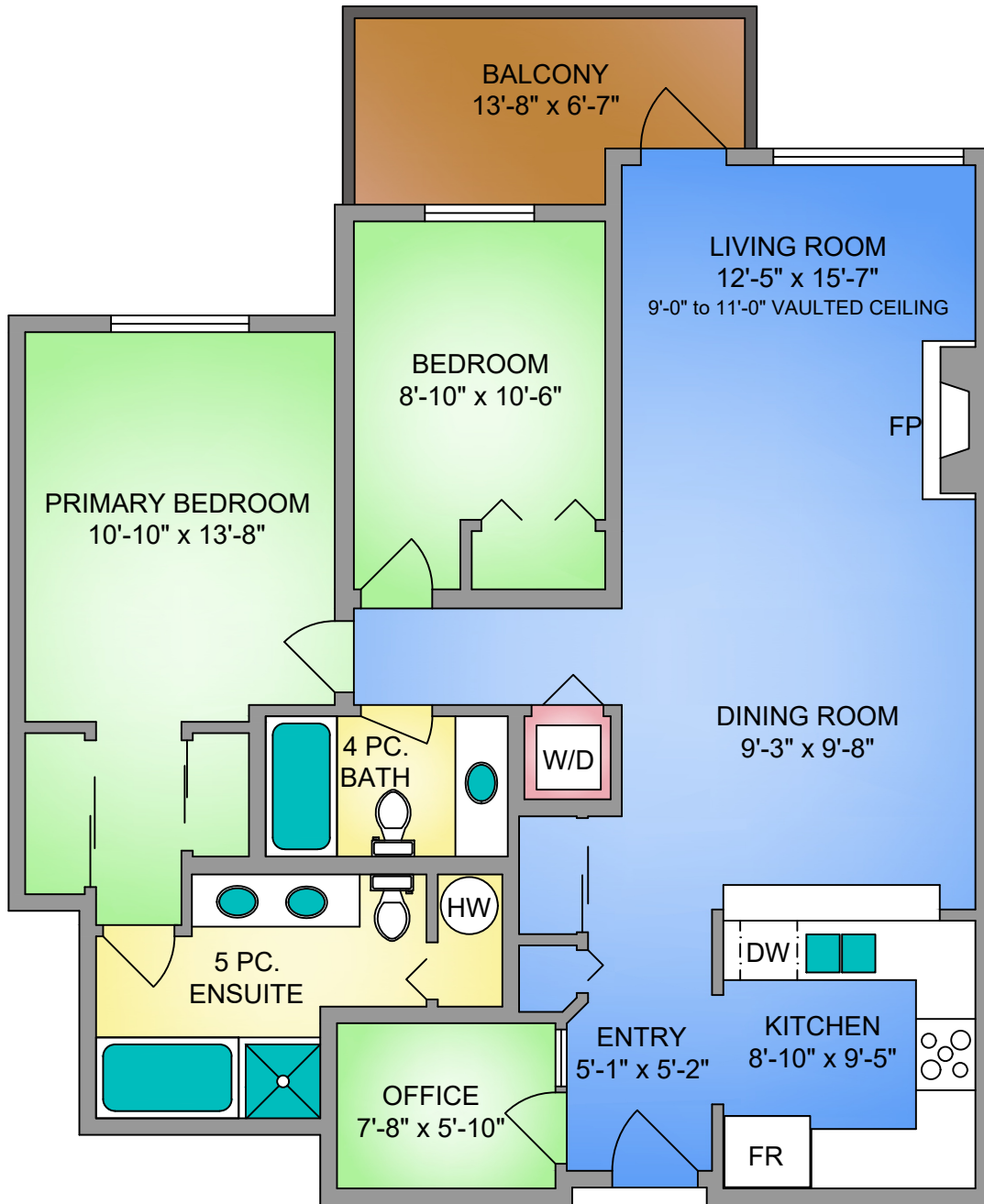


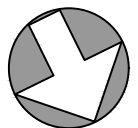
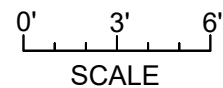
UNIT 403C - 1115 CRAIGFLOWER ROAD

1108 SQ. FT.

9' CEILING HEIGHT



NORTH



250-884-9753
matt@propermeasure.com
www.propermeasure.com

UNIT 403C - 1115 CRAIGFLOWER ROAD		
OCTOBER 02, 2025		
PREPARED FOR THE EXCLUSIVE USE OF ELI MAVRIKOS		
PLANS MAY NOT BE 100% ACCURATE, IF CRITICAL BUYER TO VERIFY.		
FLOOR	AREA (SQ. FT.)	
	FINISHED	BALCONY
FOURTH	1108	80