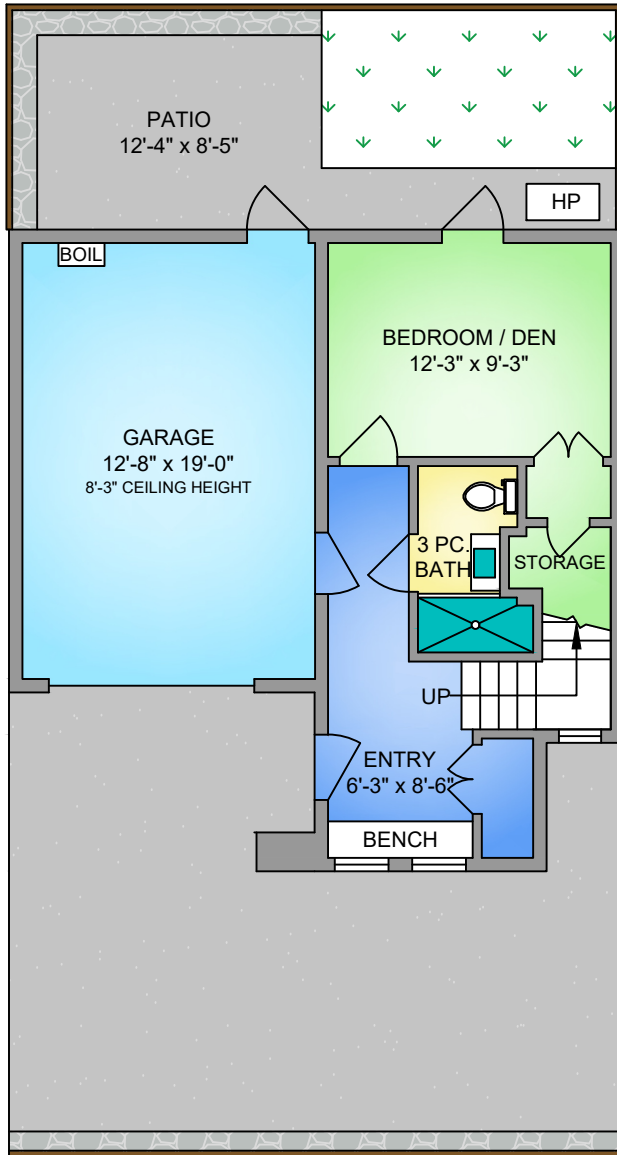


FIRST FLOOR

334 SQ. FT.

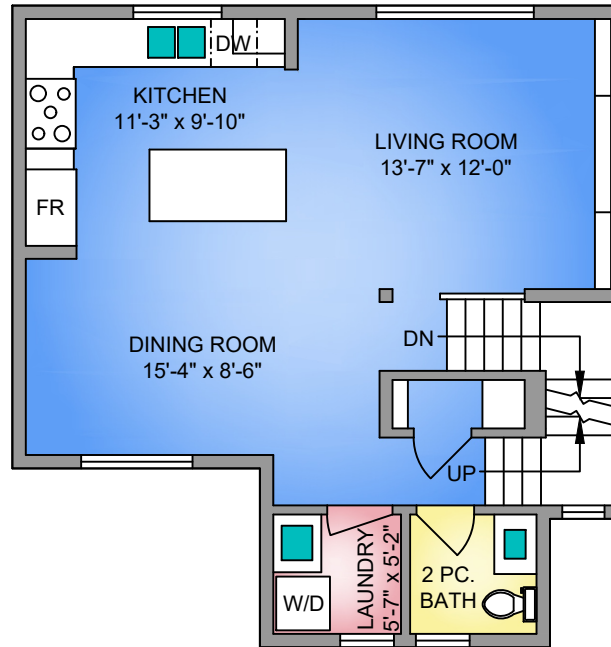
8'-0" CEILING HEIGHT



SECOND FLOOR

615 SQ. FT.

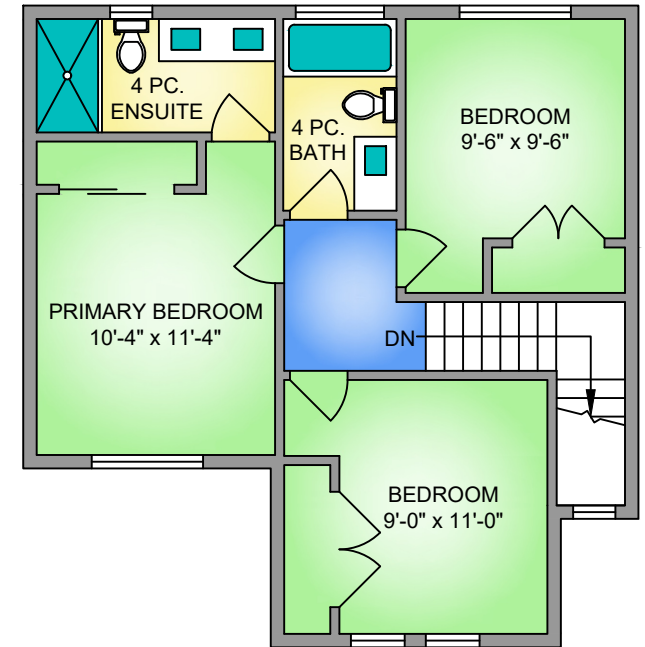
9'-0" CEILING HEIGHT



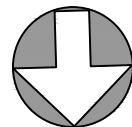
THIRD FLOOR

615 SQ. FT.

8'-0" CEILING HEIGHT



NORTH



UNIT B - 786 ST. PATRICK STREET

JANUARY 26, 2026

PREPARED FOR THE EXCLUSIVE USE OF ELI MAVRIKOS
PLANS MAY NOT BE 100% ACCURATE, IF CRITICAL BUYER TO VERIFY.

FLOOR	AREA (SQ. FT.)		
	FINISHED	GARAGE	PATIO
FIRST	334	261	104
SECOND	615	-	-
THIRD	615	-	-
TOTAL	1564	261	104