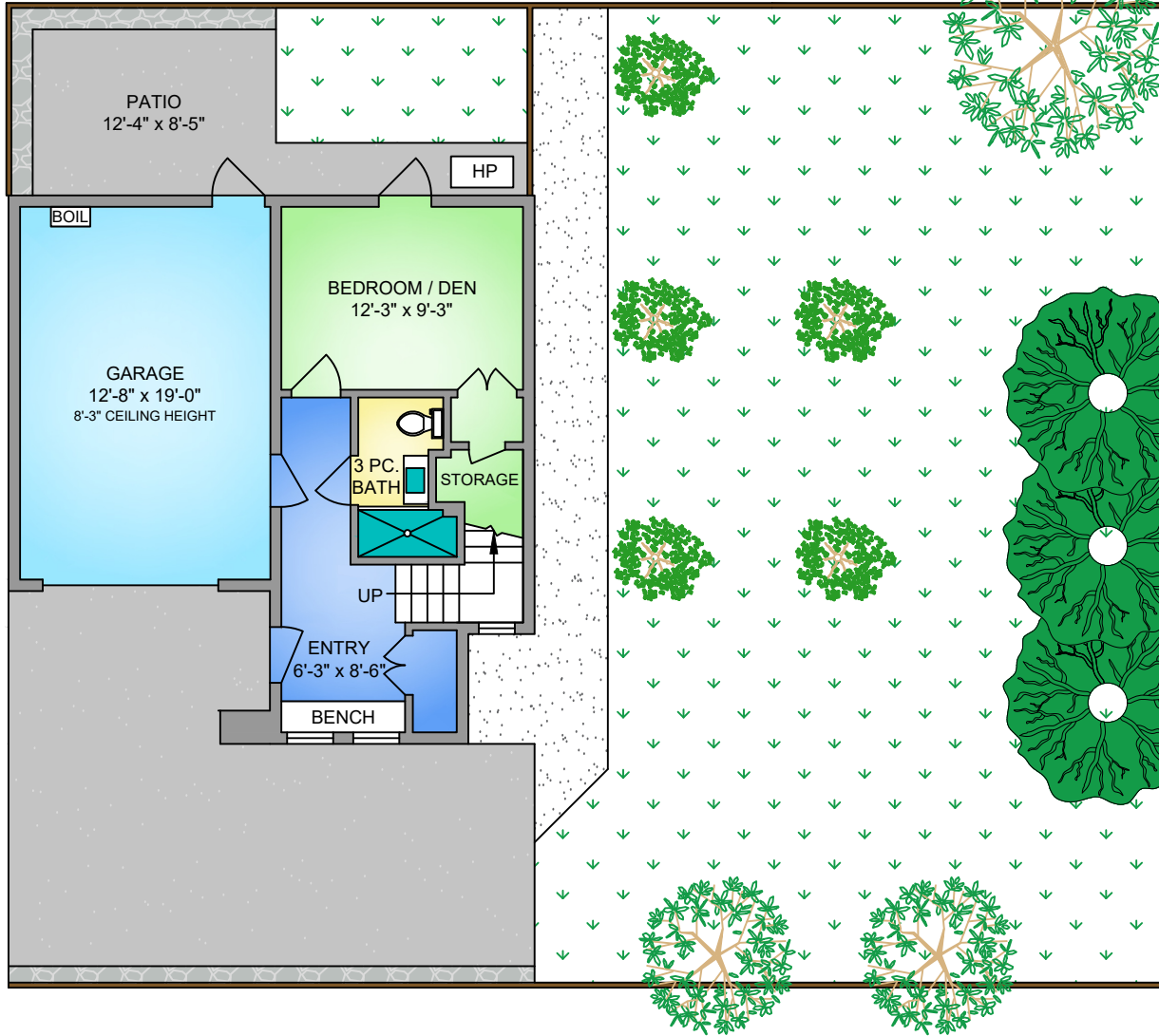
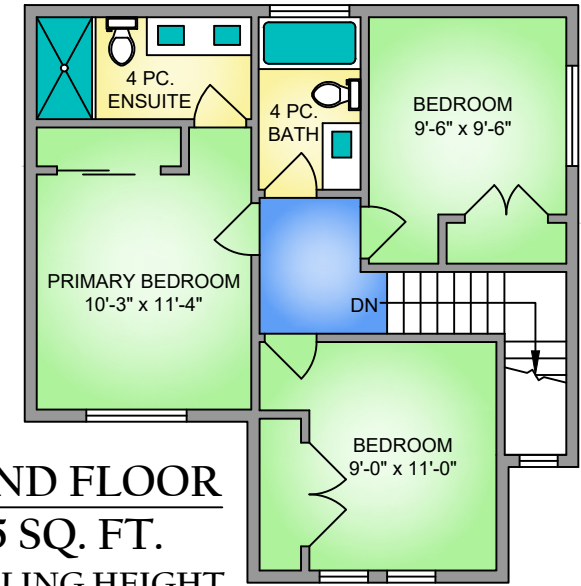


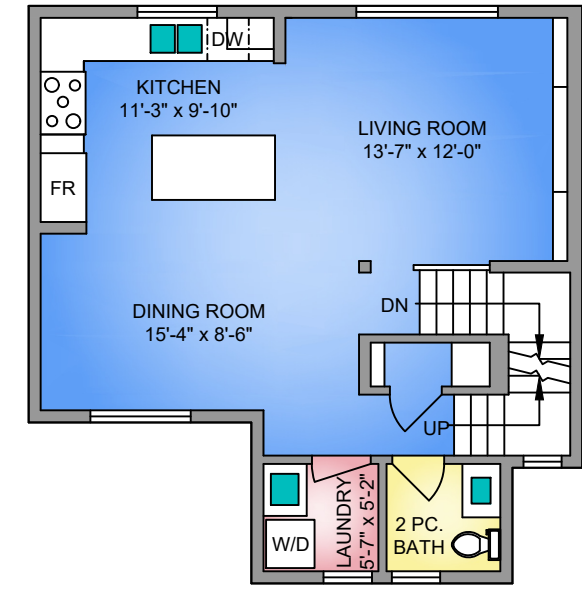
**FIRST FLOOR**  
334 SQ. FT.  
8'-0" CEILING HEIGHT



**THIRD FLOOR**  
615 SQ. FT.  
8'-0" CEILING HEIGHT



**SECOND FLOOR**  
615 SQ. FT.  
9'-0" CEILING HEIGHT



UNIT C - 786 ST. PATRICK STREET  
JANUARY 26, 2026  
PREPARED FOR THE EXCLUSIVE USE OF ELI MAVRIKOS  
PLANS MAY NOT BE 100% ACCURATE, IF CRITICAL BUYER TO VERIFY.

FLOOR	AREA (SQ. FT.)		
	FINISHED	GARAGE	PATIO
FIRST	334	261	104
SECOND	615	-	-
THIRD	615	-	-
<b>TOTAL</b>	<b>1564</b>	<b>261</b>	<b>104</b>

NORTH

