

# Harper

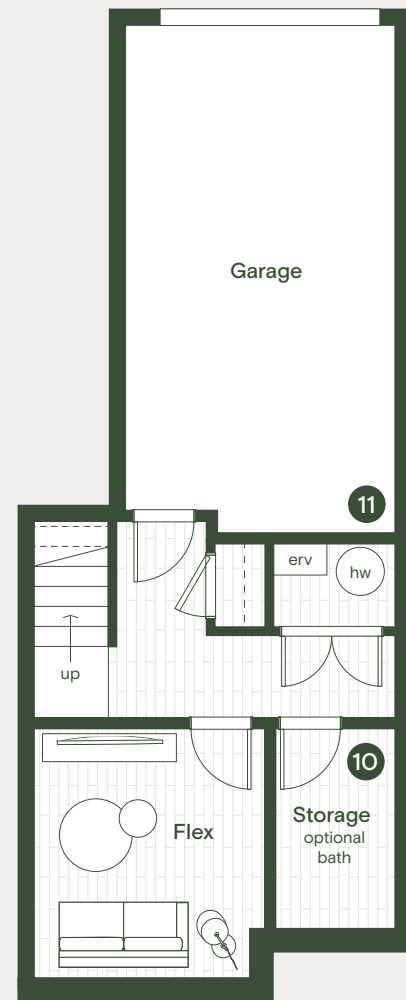
# Townhome Six

3 BEDROOM & FLEX  
2.5 BATHROOM

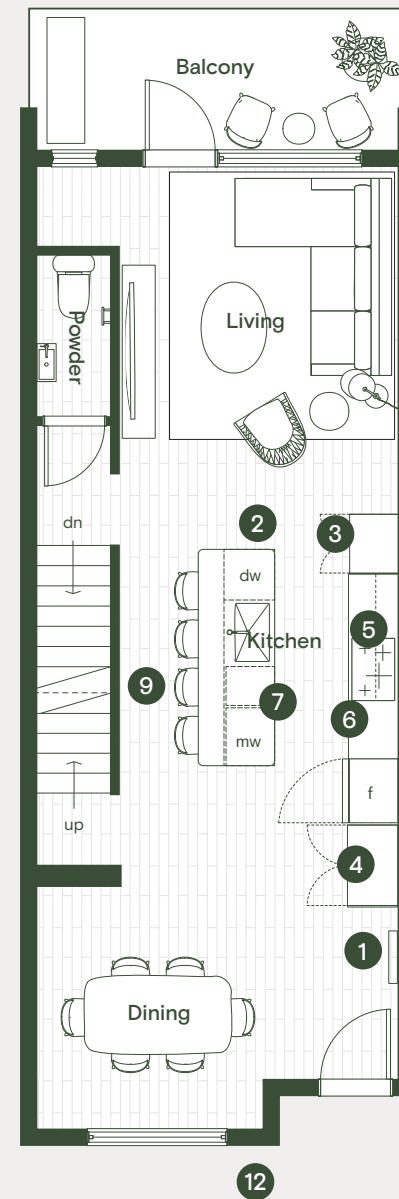
Interior	1,605 sf
Exterior	229 sf
Garage	253 sf

## In Good Form

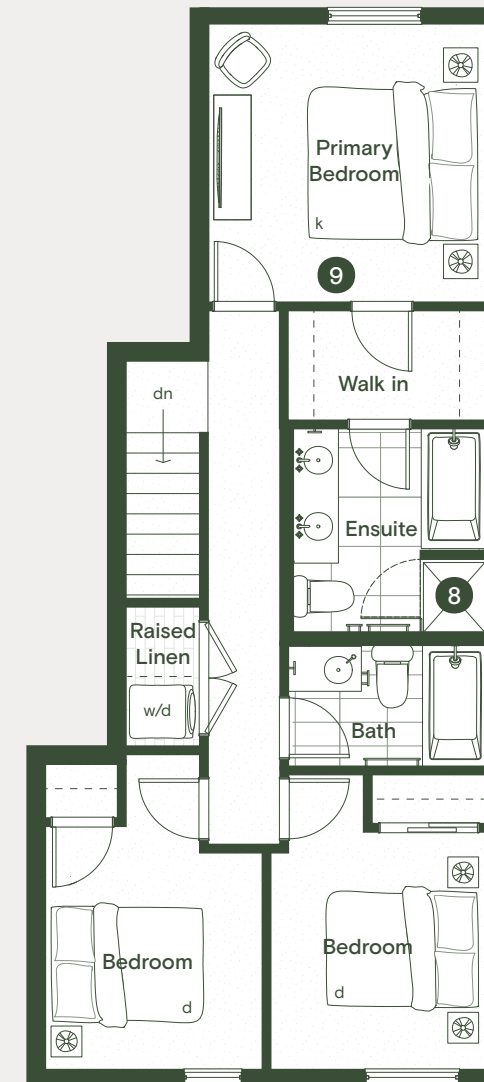
- Built-in entry niche with feature lighting
- Expansive kitchen with 171 ft<sup>3</sup> of storage
- Full height pantry
- Integrated coat and storage closet
- Custom integrated hood fan
- Bosch induction cooktop and wall oven
- Slide-out organics and recycling storage
- Tiled wall niche in shower
- Air conditioning for main floor and primary bedroom
- Optional bathroom personalizes the home
- Garage pre-wired for EV charging capability
- Expansive front patio at roughly 130 sf



LOWER



MAIN



UPPER